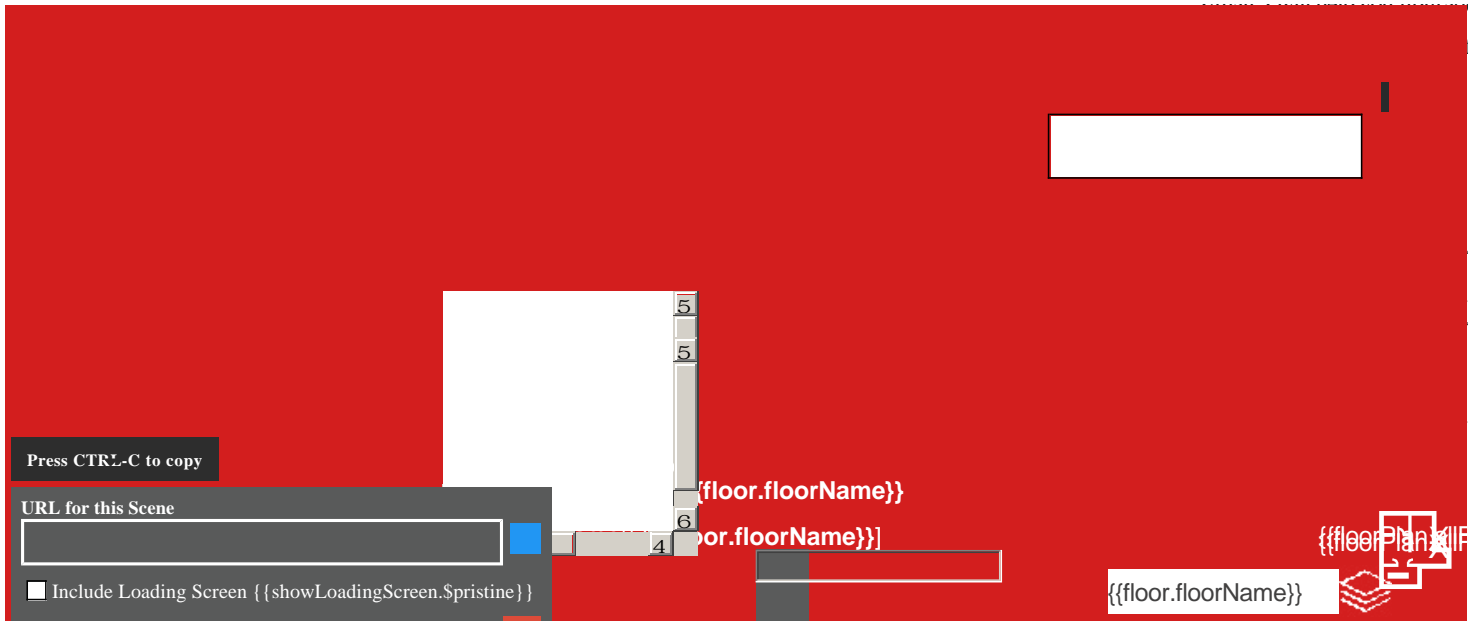


City Campus Accommodation



Bishop Bosel, Chancellor Halls

Typical En-suite Extra Room

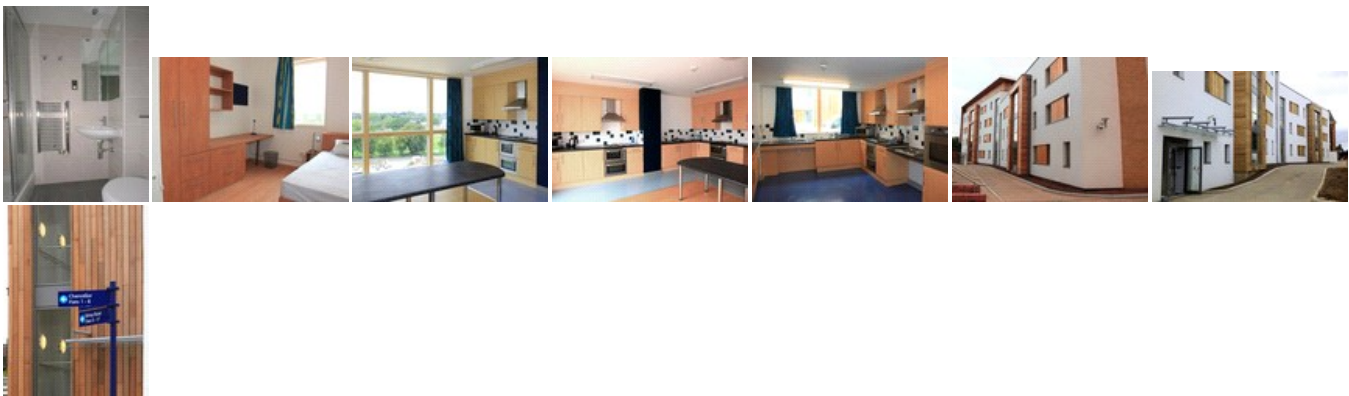


2018/19 - £159 per week

Setting a new high standard in student living, these halls (new in 2009) include 177 en suite rooms spread across Bishop Bosel and Chancellor Halls. All have large, shared kitchen and dining areas, while the study bedrooms are light, airy, spacious and fully furnished in a contemporary style. The accommodation also benefits from flat-screen TV's in the communal areas, with the cost of the TV licence covered in the rent.

See the DisabledGo access guide for [Bishop Bosel](#) and [Chancellor Hall](#).

City Campus Accommodation



All halls of residence benefit from:

Free internet access; free gym membership; gas, electricity and water bills covered by accommodation costs; 24-hour security; welfare support; 24-hour emergency maintenance; contents insurance; facilities for self catering and recycling facilities. All halls comply with the Universities UK Code of Practice for the Management of Student Accommodation and are non-smoking.

© University of Worcester Henwick Grove, WR2 6AJ Tel: 01905 855000 - Last reviewed: Thursday, 21 June 2018

Page can be found:

[Home](#) / [Make yourself at home](#) / [Explore your new home](#) / [Accommodation](#) / [University Halls of Residence](#) / City Campus Accommodation

<http://www.worcester.ac.uk/your-home/city-campus-accommodation.html>