

**ICHOSE  
WORCESTER  
BECAUSE...**



# Read about our campus and the benefits of studying at Worcester, and get a flavour of your future course. Throughout, you'll hear from students and graduates on why they chose to study at Worcester.

All information is correct at the time of printing (March 2023). However, information does change from time to time, so please check our website for the latest: [www.worcester.ac.uk](http://www.worcester.ac.uk)

Student information	34	Geography and Environment	74	Social Work	122
Course listing	36	Health and Wellbeing	78	Sport	126
Arts and Design	38	History, Politics and Sociology	82	Sports Therapy	132
Biological and Forensic Sciences	42	Journalism and Digital Media	86	Teacher Training	136
Business, Accounting and Marketing	46	Law, Criminology and Policing	90	A-Z of courses	140
Children and Families	50	Medical Sciences	96	Joint honours table	142
Computing	54	Midwifery	102	Maps	144
Drama and Performance	58	Nursing	106	Travelling to Worcester	146
Education and Inclusion	62	Paramedic Science	110	Open Days	147
English, Media and Culture	66	Physiotherapy and Occupational Therapy	114		
Film and Screenwriting	70	Psychology	118		



Why Worcester?	4
The University in detail	6
St John's Campus	10
City Campus	12
The Hive Library	14
Severn Campus for Health and Wellbeing	16



Accommodation	18
City of Worcester	20
Enhance your degree	24
Sports and societies	26
Study Abroad	28
Volunteering	30
Graduation	32



**Why Worcester?  
You'll find us friendly,  
supportive and  
very welcoming.**

The University of Worcester is a truly inclusive place where every individual is valued. It's a place where you'll receive a high-quality education and be supported to achieve your potential.



By studying at a campus-based university in a small city, you'll join a friendly, close-knit and high-achieving community of learners. Our focus on small-group learning means you'll get to know lecturers and classmates from a range of backgrounds, and you'll learn from them in a range of situations, including seminars, tutorials, workshops and practical skills sessions. This is just one of the reasons we've been ranked in the top 5 in the UK for Quality Education in all four years – 2019, 2020, 2021 and 2022 – of the Times Higher Education University Impact Rankings. We have also been shortlisted three times as the Times Higher Education University of the Year – in 2016, 2019 and 2020.

Our courses are designed with your future career in mind, and throughout your studies you'll have the opportunity to access work placements, volunteering, and earn-as-you-learn jobs relevant to your course. All this means we have one of the best records of graduate employment in the country. In the Government-published Longitudinal Educational Outcomes survey (2022), the University of Worcester was the top English university (excluding specialist institutions) for sustained employment, further study, or both, three and five years after graduation. 96% of Worcester graduates are in work or further study 15 months after graduating (Graduate Outcomes survey 2022).

**Top 5 in the UK for Quality Education**  
Times Higher Education University Impact Rankings 2022

**Shortlisted for Best Student Experience**  
Student Nursing Times Awards 2022

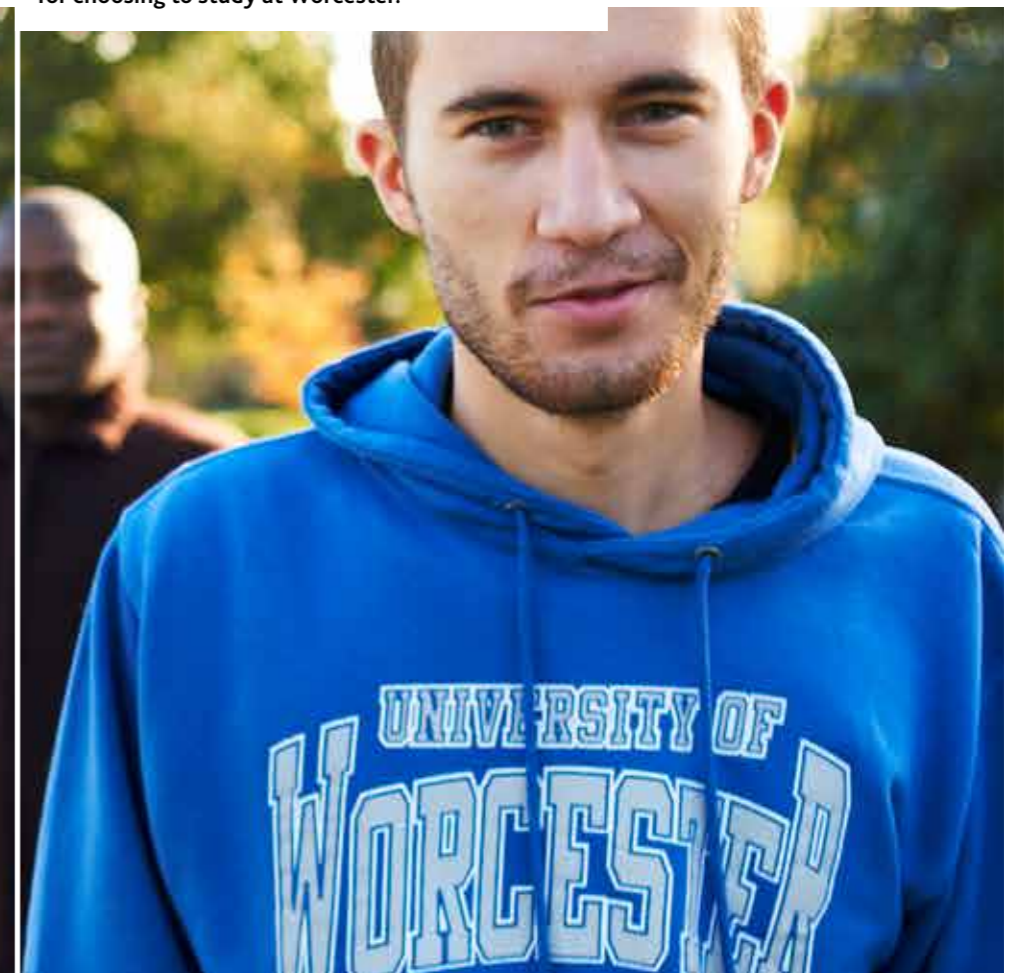
**Third for Law graduate prospects, after Oxford and Cambridge**  
The Complete University Guide 2023

**Top English university (excluding specialist institutions) for sustained employment, further study, or both**  
Three and five years after graduation – Longitudinal Educational Outcomes Survey 2022

**There are so many inspiring reasons why our existing community chooses to study here at the University of Worcester.**

**I CHOSE WORCESTER**

Throughout this prospectus we've asked our students and graduates to share their reasons for choosing to study at Worcester.





**“MY LECTURERS KNOW MY NAME which makes me feel really welcome and comfortable asking questions in class. Seminars give everyone the space to talk and bounce ideas around. They start to feel like your own little community.”**

Amber Pettit,  
English Literature

Our emphasis on small-group learning means you'll really get to know your lecturers and classmates. This creates a relaxed, interactive and inclusive learning environment, making it easier for you to ask questions and contribute to the debate.

As a new undergraduate student, you'll also be assigned a Personal Academic Tutor. This is usually one of the people teaching on your course and they typically remain with you throughout your undergraduate studies.

At Worcester our academic staff take the time to get to know you. They know your strengths and where you can develop, and can offer personalised support and feedback throughout your course.



Knowing your lecturers and classmates | Taking the time to get to know you



**I CHOSE WORCESTER**

**“Having the same Personal Academic Tutor throughout my course was really helpful. I always felt supported and they would regularly check up on me; we even went for catch-up walks around campus.”**

Danielle Kennedy,  
Sport Studies





See page 10

## St John's Campus is our original home.

.....  
We're a campus-based university. Our green and leafy main campus is located in the friendly residential community of St John's.

It's an easy walk to Worcester city centre and there are excellent transport links. There's plenty of student parking and on-site accommodation, which means you can safely and conveniently access our first-class facilities.

The St John's Campus has been our home since the University was founded 75 years ago, and today it's where you'll find the majority of our teaching spaces and halls of residence. It is also home to our study and guidance centre, food court and the Students' Union building – with its advice desk, campus shop, bar and social space.

### Facilities:

- High-quality teaching spaces
- Firstpoint, our one-stop shop for all student advice and support services
- Shared learning and study spaces
- Specialist lab facilities
- Drama studio
- Digital Arts Centre
- Sports hall
- AstroTurf pitches
- Students' Union
- Coffee shops
- Campus shop
- Food court
- A range of accommodation options



See page 12

## Our beautiful, historic City Campus is located right in the heart of Worcester, close to shops, cafés and train stations.

.....  
It is an easy walk from our St John's Campus – connected by footpaths, cycle routes and public transport – and it's just across the river from our Severn Campus.

Home to the Worcester Business School, our City Campus benefits from flexible learning spaces, interconnected with boardrooms and meeting rooms. It's an invaluable resource for local businesses, connecting you with the community and future employers.

City Campus is also where you'll find our beautiful Art House and the Jenny Lind building, with its training law court and jury room.



See page 14

## The Hive is no ordinary library.

.....  
The Hive is Europe's first fully integrated university and public library, which creates lots of opportunities for work experience and placements.

You could be running sessions in the Children's Library, supporting fellow students to access resources, or helping members of the public improve their digital skills.

With more than a quarter of a million books, 12 miles of archive collections and a dedicated study support team, it offers easy access to the resources you need for your course. You'll also always find a place to study, with a range of spaces set out over multiple levels – from comfy sofas for group work to individual workstations for quiet concentration.



See page 16

## Severn Campus for Health and Wellbeing.

.....  
Our hub for health, wellbeing and inclusive sport is situated on the banks of the river, at the mid-point between our St John's and City Campuses.

The new Centre for Health and Wellbeing on the Severn Campus is a base for interdisciplinary learning across our health courses and home to the University's new Three Counties Medical School. The new facility includes a specialised anatomy skills room using high-fidelity models for visualisation of anatomy, pathology and physiology; a simulated GP's surgery with a suite of consultation rooms; and technology for viewing and feedback.

Severn Campus is also where you'll find the University of Worcester Arena, Britain's first indoor sports hall purpose-designed to include the wheelchair athlete. The Worcester Wolves basketball teams and Severn Stars netball team play their home games here, so you can get behind the teams at the weekend with discounted tickets for students.

On the same site we have ambitious plans for a new International Inclusive Cricket Centre, which will provide a home for elite, grassroots and recreational players of all abilities and disabilities.

### Lakeside

Our Lakeside Campus is just a 10-minute drive from our St John's Campus. The 50-acre site hosts a watersports lake, woodlands and an outdoor education activity centre. This facility offers a huge range of fantastic opportunities for all our students, either as part of your course or through a Students' Union society.



See page 18

## Our welcoming accommodation halls are great places to live, study and embrace student life.

.....  
On-campus halls of residence are the perfect place to fully embrace student life and quickly make new friends.

With more than 1,000 single-occupancy rooms across our sites, we offer safe and comfortable accommodation to suit a variety of budgets and needs, including a large number of en-suite rooms. All university-managed halls operate 24-hour security and emergency maintenance, and come with contents insurance, internet access, gym membership and cleaning of communal areas.



See page 20

## The City of Worcester offers the benefits of a big city but with the friendly feel of a small town.

.....  
Worcester is a vibrant, contemporary city with a rich medieval history, and it has been recently voted the happiest place to live in the UK.

What really sets Worcester apart are the independent businesses in unique locations, from bars in 16th-century Tudor houses to coffee shops under railway arches and pub gardens on the riverbank. There are also regular street markets that offer hidden treasures in everything from artisan foods to vintage goods.

Worcester may be a city, but it's still easily explored on foot, especially because our sites all lie close to the beautiful River Severn with its scenic riverside paths. If cycling's your thing, you can join our pedal and electric bike-hire scheme to cut down your journey times even more.

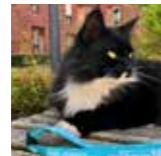
The city is set in the beautiful Worcestershire countryside, so you're never far away from a scenic picnic location, walking route or country pub.



“”

**I CHOSE WORCESTER**  
“because of the campus and how easy it is to access everything in one place.”

There’s a really friendly atmosphere that feels like a family. There’s even an unofficial campus cat!”  
**Sophie Monks,**  
Sports Therapy



Take a 360-degree tour of our St John's campus and facilities by scanning here.





## “The Art House is our innovative and experimental new home for the arts in Worcester.”

Inside you'll find a series of large open spaces that are continually transformed to meet the needs of arts students, from studios and workshops to a public gallery and exhibition space.”

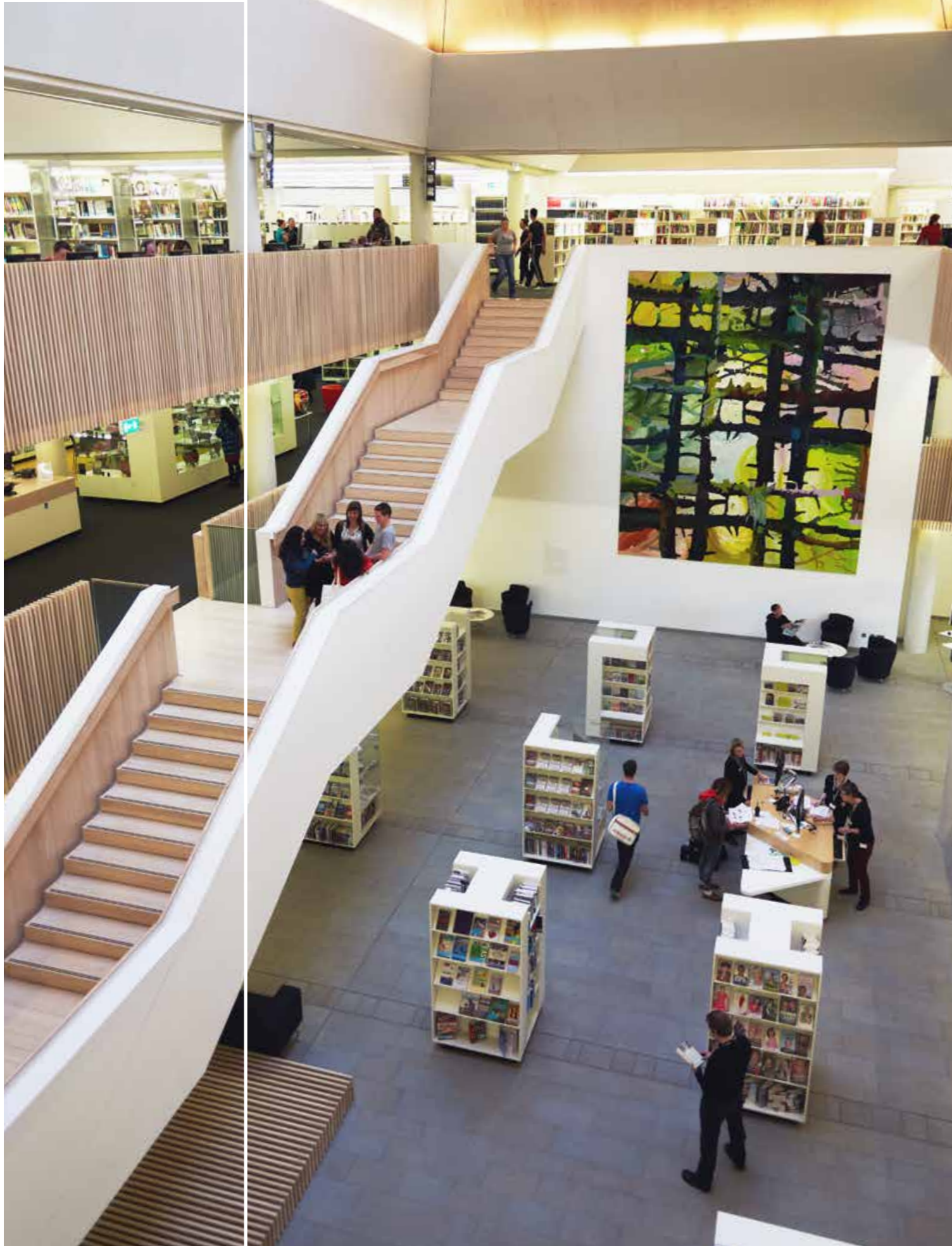
Ree Han,  
Head of Art and Design Communication

## “The purpose-built courtroom helped me feel comfortable in the law environment.”

It's got benches for judges, barristers and defendants, and there's even a jury room next door, which all helps simulate the court experience.”

Kieran Charles,  
Law





## I CH♥SE WORCESTER

“I’ve had so many opportunities already to put what I’m learning into practice, and that’s what I love about studying at Worcester.”

Katerina Choutkova,  
Primary Teaching

.....  
As part of her primary teaching degree Katerina undertook a placement in The Hive Children’s Library, one of the largest children’s libraries in the country.







“”

## I CH♥SE WORCESTER

**“If it wasn't for the placement opportunity at the Arena, I would have never got into this career. I just love doing the job.”**

**Millie Beever,**  
Worcester Graduate and  
Strength and Conditioning Coach

.....  
**Millie came to university knowing that she wanted to work in sport, but without a clear idea of what path she wanted to pursue.**

But a placement in the Arena's strength and conditioning suite changed everything and she is now in her dream career, helping professional sports stars keep in peak fitness and ensuring young athletes reach their potential.



# I CH<sup>♥</sup>SE WORCESTER

**“The rooms are designed to be accessible and if you need anything extra, they’ll work with you to adapt it.”**

Gabi Svedaite,  
Creative Digital Media



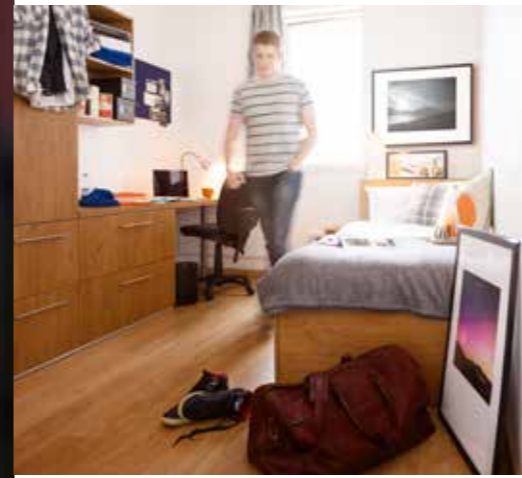
Gabi has lived in a range of halls of residence during her time at Worcester, including Mary Seacole House, our latest development which has been designed with incredibly high levels of accessibility.

**“When I was looking at universities, accessibility was key, so my focus was the accommodation. Members of the accommodation team at Worcester were really helpful. They answered all my questions and made sure I had everything I needed.**

**The rooms are designed to be accessible and if you need anything extra they’ll work with you to adapt it. All disabilities are different, but Worcester is a very accessible place to be.”**



Discover our accommodation options and prices.



Accommodation, Living in halls | Pictured at City and St. John's Campuses





# I CHOSE WORCESTER

“because I love the city!

It’s big enough that you can meet lots of new people from diverse backgrounds, and there are always places to explore and things to do, but you also have the community feel of a local town.”

Mabel Walton,  
Business and Marketing





## I CH<sup>♥</sup>SE WORCESTER

“Getting outside is good for my creativity and concentration. It’s tough to narrow down my favourite spot, but the Worcestershire Beacon on the summit of the Malvern Hills is hard to beat.”

**Ed Spalding,**  
Physical Education and Sports Studies



# Enhance your degree and stand out from the crowd. University isn't just about studying and achieving your degree, it's also a chance to gain new experiences through volunteering, placements or joining a club.

.....  
 Your years at University are the perfect time to take advantage of a variety of unique opportunities, from studying abroad and learning a language to joining a society and volunteering in the community. By getting involved in as many activities as you can, you might even surprise yourself and find something new that you really love to do.

Our Worcester Award scheme supports you into voluntary roles and gives you the chance to record your extra activities. Taking part encourages you to reflect upon how these activities help you develop skills and enhance your employability. The official certificate also makes a great addition to your CV.

When it comes to graduate employment, we have a great track record.

**Worcester is the number one English higher education institute (excluding specialist institutions) for sustained employment, further study, or both, three and five years after graduation**

.....  
 (Longitudinal Educational Outcomes survey, 2022)

**96% of Worcester graduates are in work or further study 15 months after graduating**

.....  
 (Graduate Outcomes survey, 2022).



See page 26

## Join a club or society and become a part of #TeamWorc.

.....  
 Discover exciting new hobbies, unleash hidden talents, find a new passion or indulge in what you already love. Being part of a society or sports club welcomes you into a family of like-minded individuals and it's an exciting place to make new friends.

We have a huge range of societies and sports clubs at Worcester so whatever your interests, you can get involved.

And if you don't find the group for you, the Students' Union will support you to set up your own club or society.



See page 28

## Studying abroad is one of the most exciting opportunities available to you while at university.

.....  
 It's an experience you'll remember for the rest of your life.

At Worcester you can spend a semester abroad at one of our partner universities in your second year. You'll take modules that fulfil and complement your usual degree requirements. You can also switch to a four-year degree and spend your third year studying or working abroad.

You'll experience new cultures, make friends from all over the world and learn a huge amount about yourself. Very few UK students study abroad as part of their degree, so you'd join an elite group of enterprising students.



See page 30

## Volunteer and gain additional qualifications.

.....  
 Our careers team will support you to find and apply for these opportunities, such as running a kids' coding club or caring for adults with dementia. They also run the Worcester Award scheme, which allows you to record, reflect on and receive official recognition for these extra-curricular experiences.

In particular, there are lots of opportunities for you to get involved in sustainable activities that reduce our impact on the environment, from organising Go Green Weeks to helping at our allotment.



See page 32

## At the end of your course, celebrate your achievement with family, friends and lecturers at graduation.

.....  
 The beauty and grandeur of Worcester Cathedral provide a magnificent backdrop for graduation.

The ceremonies are a highlight of the University calendar and a chance to reunite with your classmates and lecturers; they also mark the beginning of your onward journey.



“ ”  
**I CH♥SE  
WORCESTER**

**“Societies and sports clubs at Worcester are some of the best ways to build friendships, learn new skills and develop your confidence.”**

**Lauren Reid,**  
Education Studies



Explore all the sports clubs and societies run through the Worcester Students' Union.



# Study abroad – take the chance to study, volunteer or work in another country.

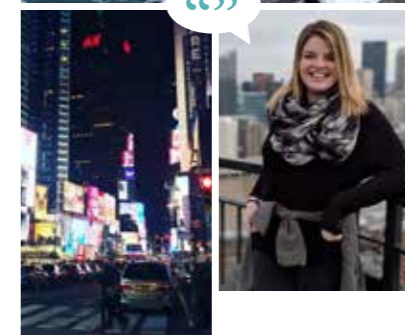
It's one of the most exciting opportunities available to you while at university, and it's an experience you'll remember for the rest of your life.



## I CHOSE WORCESTER

"I met so many people, formed lifelong friendships, experienced incredible sights and ate delicious food. I honestly cannot recommend studying abroad enough! You'll grow so much as a person."

James Dunn,  
Japan



## I CHOSE WORCESTER

"It can seem scary but you will have the best time! Study-abroad programmes are a once-in-a-lifetime opportunity."

Lauren Reid,  
USA

"Going on an exchange was one of my best decisions ever. I don't know where to begin when explaining how much I enjoyed my time out there and the opportunities I was lucky to experience."

Shannon Coates,  
Canada



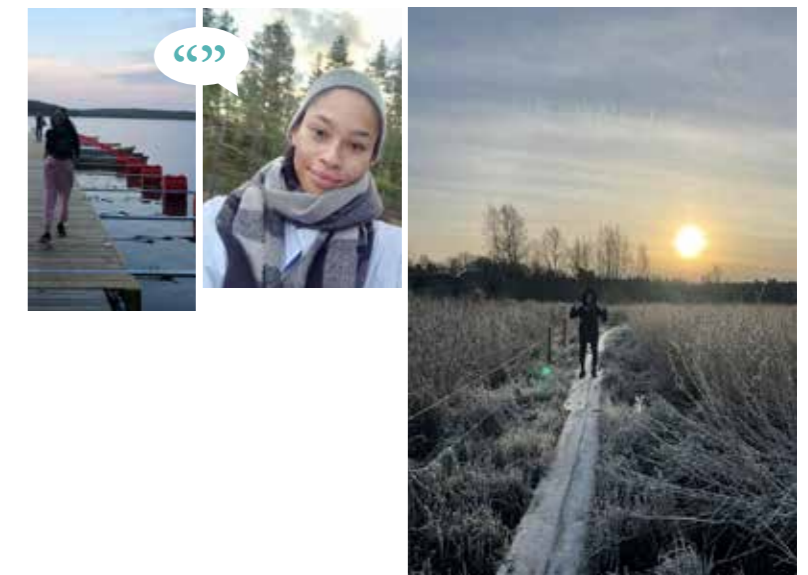
"I really enjoyed my experience of studying abroad. I have memories to last a lifetime and made some friends for life too – dotted all over the world!"

I would recommend the study-abroad programme. It's a great way to broaden your awareness and understanding of different cultures and ways of life."

Estella Maloney-Danvers,  
The Netherlands

"When I set off, I was full of excitement and nervousness as this was my first time solo travelling overseas. I'm so glad I did it, as I saw so much and met so many great people – I loved my time in Finland!"

Olivia Hardiman,  
Finland



## Get involved and make a difference

At Worcester there are lots of opportunities for you to get involved in sustainable activities that reduce our impact on the environment.

We have our very own allotment where you can get stuck in with planting, weeding, and digging beds. At the same time, you can learn about growing different seeds, transplanting, making compost and providing habitats for insects.

Our Go-Green Weeks give you the opportunity to organise a range of fun and engaging activities to raise awareness of sustainable living. You can also sign up to our bike and electric-bike share scheme, for cheap and convenient travel around the city.

## I CHOSE WORCESTER

"Volunteering at the University allotment is a wonderful opportunity to bring green living to life."

Juliet Mootz,  
Fine Art



**Our sustainable initiatives, combined with our commitment to recycling and energy efficiency, have led to Worcester receiving First Class Honours in the People and Planet University Sustainability League 2022.**





## I CHOSE WORCESTER

"Graduation is an exciting time. It marks both an ending and a beginning; it's warm memories of the past and my big dreams for the future."

Harriet Williams,  
Law graduate



The University of Worcester is the top English university (excluding specialist institutions) for sustained employment, further study or both

(Three and five years after graduation, Longitudinal Educational Outcomes Survey 2022)



# Student information. The University offers a range of information, support and advice to help you make the most of your life as a student and achieve your potential in your academic studies.

Scan to read more about the wide range of services and support available to you as a Worcester student.



## Firstpoint

Our friendly team is the first point of contact for all your student enquiries, offering advice and guidance on academic and pastoral issues, as well as providing a range of services. If you need more specialist support or information, firstpoint advisers can arrange this for you.

## Student Support & Wellbeing

The team is here to encourage you to have an enjoyable experience throughout your time at University, to offer support and guidance, and to promote positive health and wellbeing. We will support you through the transition into student life and community living to make it as effortless as possible.

## Careers & Employability

96% of Worcester graduates are in work or further study 15 months after graduating (Graduate Outcomes Survey, 2022). We can help you to find part-time work through myCareer, our jobs and bookings portal, we have a comprehensive programme of careers workshops and events, and our Worcester Award can help to show employers some of the skills you have gained. When you graduate, our advisers will help you to plan for the future.

## Money Advice

We can offer advice, guidance and support, both before you start your course and during your studies at Worcester. We can help with any queries about student loans and grants, NHS Funds, support for students with children, Educational Trust Funds, welfare benefits, debt management and budgeting. We can also offer additional support to students in financial difficulty through the University's Hardship Fund.

## Disability and Dyslexia

We offer support and advice if you have any disability, long-term medical condition or specific learning difficulty like dyslexia. We can arrange reasonable adjustments to suit your needs as well as helping you to access a wider support package.

Specialist advice and guidance is available for students who think they may need additional support related to a specific learning difficulty. Early contact with the service is strongly encouraged.

## Counselling and Mental Health

Our professional practitioners offer a free service to all students. You can talk confidentially about a wide range of emotional or psychological difficulties that may be preventing you from living life to its full potential. We can support you if you have a pre-diagnosed or emerging mental health condition, or emotional difficulties which significantly affect your daily life.

## International Experience

Our team supports incoming international students with pre-arrival information, a meet-and-greet service, an international induction and advice about visas, finances and life in the UK. The team also supports all students interested in study-abroad opportunities and works with the Students' Union and University departments to provide opportunities for UK and international students to integrate socially and academically.

## IT Services

We have IT support desks at the Peirson Study & Guidance centre and at The Hive, and dedicated phone and chat support to provide you with the support you need on and off campus.

## Library Services

Based at The Hive and online, the team makes sure you have easy access to all the books, journals and learning technologies required, as well as offering sessions and guidance including finding, accessing, evaluating and referencing information.

## Students' Union

The Students' Union (SU) is an independent organisation, separate from the University, that supports and represents students throughout their time at Worcester. The SU is responsible for lots of the additional aspects of university life beyond academic studies. This includes societies, sports clubs, representative networks, fundraising, volunteering, help and advice, and The Hangar Bar.

## Unitots Nursery

Unitots, on the St John's Campus, takes children of students, staff and local residents from three months up to school age. The Nursery is self-contained and has extensive outside space, as well as access to facilities on the campus such as the sports centre, allotment and nature walks.

## Chaplaincy

Our multi-faith Chaplaincy Service is available to provide spiritual support to all our students and staff, of all faiths and none. The University provides prayer and quiet rooms with adjacent washing facilities.

**For more information contact [firstpoint@worc.ac.uk](mailto:firstpoint@worc.ac.uk) or 01905 542551.**



Scan for information on fees and finance, making an application, admissions, and our terms and conditions.

# Explore our courses

The following pages offer an overview of the subject areas available at Worcester, as well as an opportunity to hear from students and graduates on why they chose to study with us.

This course listing below is subject to change, so please visit our website for the most up-to-date list, as well as detailed course information.



## Arts and Design

- Animation (Joint Honours)
- Fine Art BA (Hons)
- Fine Art with Psychology BA (Hons)
- Game Art BA (Hons)
- Graphic Design BA (Hons)
- Graphic Design, Advertising and Marketing BA (Hons)
- Illustration BA (Hons)

## Biological and Forensic Sciences

- Biological Sciences (Biology) BSc (Hons) or MBiol (Integrated Masters)
- Biological Sciences (Biochemistry) BSc (Hons) or MBiol (Integrated Masters)
- Biological Sciences (Human Biology) BSc (Hons) or MBiol (Integrated Masters)
- Biological Sciences (Zoology) BSc (Hons) or MBiol (Integrated Masters)
- Biological Sciences BSc (Hons) with Foundation Year
- Biomedical Science BSc (Hons)
- Forensic and Applied Biology BSc (Hons)

## Business, Accounting and Marketing

- Accounting and Finance BA (Hons)
- Business and Finance BA (Hons)
- Business and Human Resource Management BA (Hons)
- Business and Marketing BA (Hons)
- Business Management BA (Hons)

- Business Management BA (Hons) Top-Up Degree
- Business Studies BA (Hons)
- Chartered Manager Degree Apprenticeship
- Cyber Security BSc (Hons)
- Data Science BSc (Hons)
- Digital Business BA (Hons)
- Digital Marketing BA (Hons)
- International Business Management BA (Hons)
- International Finance BA (Hons) Top-up Degree
- Marketing, Advertising and Public Relations BA (Hons)
- University Diploma in Leadership and Management (UDLM)

## Children and Families

- Early Childhood in Society (Graduate Practitioner) BA (Hons)
- Early Years (0-8) Foundation Degree
- Early Years (0-8) Foundation Degree – flexible distributed learning pathway
- Early Years Professional FdA
- Integrated Working with Children & Families BA (Hons) Top-up Degree

## Computing

- Computing BSc (Hons)
- Computing Foundation Year
- Cyber Security BSc (Hons)

## Drama and Performance

- Dance Theatre BA (Hons)
- Musical Theatre BA (Hons) with Millennium Performing Arts

- Theatre, Acting & Performance BA (Hons)
- Touring Theatre MTheatre

## Education and Inclusion

- Advancing Practice BA (Hons) Top-up Degree
- Education Studies BA (Hons)
- Inclusive Education FdA
- Learning and Education FdA
- Learning Support FdA
- Professional Practice BA (Hons) Top-up Degree
- Special Educational Needs, Disabilities and Inclusion BA (Hons)
- Teaching and Learning FdA

## English, Media and Culture

- Creative Writing BA (Hons)
- English Language (Joint Honours)
- English Literature BA (Hons)
- Film Studies BA (Hons)
- Media & Culture BA (Hons)

## Film and Screenwriting

- Film Production BA (Hons)
- Film Studies BA (Hons)
- Screenwriting (Joint Honours)

## Geography and Environment

- Environmental Management and Sustainability BSc (Hons)
- Environmental Management and Sustainability with Foundation Year BSc (Hons)

- Environmental Management and Sustainability with Placement Year BSc (Hons)

- Geography BSc (Hons)

- Geography BSc (Hons) with International Year Abroad

## Health and Wellbeing

- Applied Health and Social Care BA (Hons) Top-up Degree
- Child & Adolescent Mental Health FdSc
- Child & Adolescent Mental Health BSc (Hons) Top-Up Degree
- Counselling FdSc
- Health and Social Care FdSc
- Health and Wellbeing in Society FdSc
- Healthcare BSc (Hons)
- Healthcare Foundation Year
- Integrative Counselling BA (Hons)
- Integrative Counselling FdA
- Mental Health and Wellbeing of Children and Young People FdSc

## History, Politics and Sociology

- History BA (Hons)
- History with Politics BA (Hons)
- Politics Degrees
- Sociology BA (Hons)
- Sociology with Politics BA (Hons)

## Journalism and Digital Media

- Digital Media Production BA (Hons)
- Journalism BA (Hons)

## Law, Criminology and Policing

- Criminology BA (Hons)
- Criminology with Forensic Psychology BA (Hons)
- Criminology with Policing BA (Hons)
- Criminology with Politics BA (Hons)
- Law LLB (Hons)
- Law with Criminology LLB (Hons)

- Law with Forensic Psychology LLB (Hons)

- Law with Politics LLB (Hons)

- Professional Policing BA (Hons)

## Medical Sciences

- Biomedical Science BSc (Hons)
- Dental Technology FdSc
- Diagnostic Radiography BSc (Hons)
- Medical Sciences BSc (Hons)
- Medicine MBChB
- Physician Associate MSC

## Midwifery

- Midwifery BSc (Hons)
- NCT Perinatal Education and Practice CertHE

## Nursing

- Nursing Associate Apprenticeship
- Nursing Associate FdSc
- Nursing BSc (Hons)
- Return to Nursing Practice

## Paramedic Science

- Paramedic Science BSc (Hons)

## Physiotherapy and Occupational Therapy

- Occupational Therapy BSc (Hons)
- Physiotherapy BSc (Hons)

## Psychology

- Business Psychology BSc (Hons)
- Clinical Psychology BSc (Hons)
- Counselling Psychology BSc (Hons)
- Forensic Psychology BSc (Hons)
- Health Psychology BSc (Hons)
- Psychology BSc (Hons)
- Psychology with Politics BSc (Hons)
- Sport and Exercise Psychology BSc (Hons)

## Social Work and Community

- Social Work BA (Hons)

## Sports and Physical Education

- Cricket Coaching and Management (Integrated Masters or BSc)
- Exercise and Wellness Management BSc (Hons) Top-up Degree
- Exercise and Wellness Management FdSc
- Football Business Management and Coaching FdSc
- Outdoor Leadership and Adventure Sports Coaching BSc (Hons)
- Physical Education BSc (Hons)
- Physical Education and Sports Coaching BSc (Hons)
- Sport and Exercise Science BSc (Hons)
- Sport Business Management BA (Hons)
- Sport Development and Coaching BA (Hons)
- Sports Coaching and Physical Education FdSc
- Sports Coaching BSc (Hons)

## Sports Therapy

- Sports Therapy BSc (Hons)
- Sports Therapy MSci (Integrated Masters)

## Teacher Training

- Diploma in Education and Training (DET)
- PGCE – Further Education
- PGCE – Primary
- PGCE – Primary Education with SENDI
- PGCE – School Direct Primary
- PGCE – School Direct Secondary
- PGCE – Secondary
- Primary Initial Teacher Education (with QTS) BA (Hons)
- Teaching in Primary Education (with QTS) BA (Hons) Top-up Degree
- University Diploma in Personal, Social and Health Education

## I CH<sup>♥</sup>SE WORCESTER

“The Art House is an amazing space to exhibit in. It inspired me to work at a scale I could never have imagined in another location.”

Juliet Mootz,  
Fine Art



# Arts and Design

From fine art and illustration to game art and animation, we have creative and professionally focused courses to suit you.

### Available courses

- Animation  
(Joint Honours)
- Fine Art  
BA (Hons)
- Fine Art with Psychology  
BA (Hons)
- Game Art  
BA (Hons)
- Graphic Design  
BA (Hons)
- Graphic Design, Advertising  
and Marketing  
BA (Hons)
- Illustration  
BA (Hons)
- Plus  
Joint honours combinations

At Worcester our smaller class sizes mean you'll benefit from one-to-one guidance and mentoring in a close-knit community of peers and supportive staff.

You'll work on live professional briefs as part of your course, giving you experience working with real-world clients and preparing you for a career in the creative industries. And you'll experience all of this in our fantastic bespoke facilities, including the beautiful Art House.



**Detailed information**  
Scan for detailed course information and entry requirements.



### Arches project

Worcester's railway arches are being transformed into a major new cultural destination for the city, providing a hub for creative industries.

### The Art House

A lively and stimulating environment for you to develop as an artist.

The Art House is a beautiful studio, workshop and exhibition space right in the city centre.



## Preparing for a career in the creative industries

Amy, who chaired the student Marvel and DC Society, said studying during the pandemic in 2020 was challenging but she still received lots of support.



### I CHOSE WORCESTER

"I loved the variety within the course, along with the fact that many projects involve real live clients which helps tremendously in gaining experience and skills."

Another element was 'Pressure Projects' where we worked as a team to produce outputs for a brief, within 24 hours. It went so well for my team that I managed to get work experience out of it.

The support I received from lecturers was great. They were so active in providing help if needed, whether it was in person, a Teams call, an email or within a lecture.

As well as this they worked so hard to enable our degree show to go ahead in person at The Art House. We were even able to have family and friends visit, which really ended the year on a high."

Amy Warburton, Graphic Design

### You might also be interested in:

Virtual tour of The Art House

Worcester Degree Shows  
A prestigious private view opens these final year exhibitions, which are your chance to share your work with top industry professionals



Explore online Scan to find the related content shown above.



# Biological and Forensic Sciences

Smaller class sizes, state-of-the-art laboratories and specialised equipment for fieldwork create an environment designed to help you succeed.

## Available courses

Biological Sciences (Biology)  
BSc (Hons) or MBIol  
(Integrated Masters)

Biological Sciences (Biochemistry)  
BSc (Hons) or MBIol  
(Integrated Masters)

Biological Sciences (Human Biology)  
BSc (Hons) or MBIol  
(Integrated Masters)

Biological Sciences (Zoology)  
BSc (Hons) or MBIol  
(Integrated Masters)

Biological Sciences with Foundation Year

Biomedical Science  
BSc (Hons)

Forensic and Applied Biology  
BSc (Hons)



Detailed information  
Scan for detailed course information and entry requirements.

## I CH<sup>♥</sup>SE WORCESTER

“The lecturers at Worcester were fantastic. They really got to know us and supported us with our aspirations; they’re always there when you need them.”

Shannon Bolton,  
Biological Sciences (Zoology)

Biological and Forensic Sciences are actively changing disciplines, with scientists seeking solutions to the many challenges that shape our world. At Worcester we can help you to engage with Biological Sciences in many forms, from the molecular, through whole organisms and their relationships with each other, to on-site mock-crime scenes and simulated biological evidence.



## Science facilities for students

Our state-of-the-art analytical laboratories and specialised equipment create an environment that can harness the scientific potential of our students. Staff and student researchers have access to a range of different laboratories, including some that are set aside purely for the use of undergraduate students. We have laboratories that offer high-performance computing facilities, growth cabinets and equipment for protein crystal growth, and a lipidomics laboratory as well as extensive chromatographic equipment.

The equipment regularly used by our undergraduates includes qPCR, gas chromatography, atomic absorption spectroscopy, human cell culture facilities and professional-standard equipment such as high-spec microscopes for image analysis. Our facilities are complemented by our dedicated teaching team whose diverse specialisms and research areas allow you to pursue your scientific interests. We are proud of the high proportion of graduates who enter careers in science or study postgraduate courses in their chosen field.



We have one of the most advanced atmospheric sampling stations in Europe. It is used for staff and student research, enabling the detection of pollen, fungal spores, bacteria and other airborne micro-organisms. We use this equipment to create the daily pollen forecast across the UK.



## Biological Sciences pathways

During the first year, all Biological Sciences students study the same content, gaining knowledge in a range of core biological areas. After the first year, you can then decide whether to continue with Biology or to further specialise into Biochemistry, Human Biology or Zoology. This gives you time and flexibility to make your decision.



I CHOSE WORCESTER

“The knowledge and passion displayed by lecturers on this course was exceptional and they were always there to offer support if necessary, including one-to-one sessions and online meetings.”

### From degree to dream job

Shortly after completing her studies, Becky was successful in securing a job in the Forensics Department at West Mercia Police.

“My area of interest has always been within Forensic Science and throughout my degree I thoroughly enjoyed all of the modules, particularly Crime Scene Investigation, Interpretation, Evaluation and Reporting of Evidence and Forensic DNA Analysis.”

Becky Jennings,  
Forensic and Applied Biology



Explore online Scan to find the related content shown above.



## I CHOSE WORCESTER

“I chose the University of Worcester because I wanted smaller class sizes and a collaborative environment where I could engage with other students and we could work together.”

**Tatiana Bobulova,**  
Business Management

Our City Campus is home to the Worcester Business School. Here you can immerse yourself in a real-world business environment, with flexible learning spaces, PC labs and boardroom meeting space.

# Business, Accounting and Marketing

Our courses explore contemporary issues and the latest thinking around innovation, creativity and sustainable management.

### Available courses

- Accounting and Finance BA (Hons)
- Business and Finance BA (Hons)
- Business and Human Resource Management BA (Hons)
- Business and Marketing BA (Hons)
- Business Management BA (Hons)
- Business Management BA (Hons) Top-up Degree
- Business Studies BA (Hons)
- Chartered Manager Degree Apprenticeship
- Cyber Security BSc (Hons)
- Data Science BSc (Hons)
- Digital Business BA (Hons)
- Digital Marketing BA (Hons)
- International Business Management BA (Hons)
- International Finance BA (Hons) Top-up Degree
- Marketing, Advertising and Public Relations BA (Hons)
- University Diploma in Leadership and Management (UDLM)



**Detailed information**  
Scan for detailed course information and entry requirements.

Depending on your choices you'll have module options which cover topics from globalisation and business sustainability to entrepreneurship and digital communications.

The courses will develop your business knowledge, skills and real-world experience through applied projects, placements, internships and study abroad. We work closely with employers to ensure courses develop sought-after skills using innovative assessment methods.





After graduating, Finley started a job at FedEx as a Transformation Analyst, after originally completing a placement year with the firm during his studies at Worcester.

**“During my time at Worcester, I studied abroad in Canada, completed a placement at FedEx/TNT as a project manager, joined the badminton society as both the treasurer and social secretary and had part-time jobs throughout.”**

**Finley Harrison,**  
International Business Management



## Life-changing placement

Charlotte did her placement year at Hazelwoods LLP in Cheltenham, and is now a trainee chartered accountant (ACA) working in their tax department.



## I CHOSE WORCESTER

**“I still have plenty of hard work ahead of me, but I can’t wait to become an ICAEW chartered accountant at the end of my three-year training contract.”**

I chose to study at the University of Worcester because of the beautiful city and the wonderful business campus. As well as the great scenery, I was drawn in by the exemptions towards my professional exams offered on the accounting course.”

**Charlotte Joanne Gymer,**  
Accounting and Finance

### You might also be interested in:

Find out about placement year options

How you can benefit from accreditation, exemptions and membership from a range of professional bodies



Explore online Scan to find the related content shown above.



## I CH<sup>♥</sup>SE WORCESTER

“The course provided me with a deep understanding of child learning and development, and gave me greater confidence to deal with children, parents and multi-agencies. I enjoyed it so much!”

Sally Eldridge,  
Early Years



# Children and Families

Develop the skills to guide young people and their families across a range of education, health and social care environments.

### Available courses

Early Childhood in Society (Graduate Practitioner) BA (Hons)

Early Years (0-8) Foundation Degree

Early Years (0-8) Foundation Degree – flexible distributed learning pathway

Early Years Professional FdA

Integrated Working with Children & Families BA (Hons) Top-up Degree

These professionally relevant courses enable you to gain practical experience while building your knowledge and skills. Many of our courses lead directly to professional as well as academic qualifications, putting you in a great position to launch your career working with children, young people and families.



Detailed information  
Scan for detailed course information and entry requirements.



“My current role is as a Youth Support Worker at a fostering agency. I work with young people in the care system who have had a hard start to life and therefore need a lot of support. My job is to provide this support to the young people and their foster carers, through a nurturing and empathetic approach. The role is varied and no two days are alike. I lead targeted interventions and mentoring, supervise contact, offer educational support, and much more.

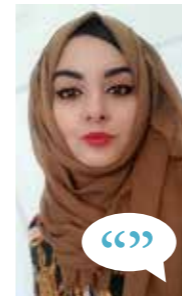
**I can't thank the tutors at the University of Worcester enough for providing the foundation of knowledge and support I have needed to start my career.”**

**Danielle Hughes,**  
Early Childhood in Society



## Opening up a wide range of careers

During her time at the University, Aishah was elected as a Student Rep, which meant representing her fellow students' views. She also attended the British Early Childhood Education Research Association (BECERA) conference where she, with fellow students and her tutor, presented a poster symposium on living in poverty and the impact on home learning.



## I CHOSE WORCESTER

**“I loved how there was flexibility in the course and how it was structured. The tutors really made me feel at ease throughout the course.”**

Aishah is now training to become a teacher, one of the many opportunities available to her. Her plan, once she qualifies, is to become a primary school teacher with a specialism in early years.

“The course related to my interest in working with children and fitted in perfectly with my HND due to it being a top-up course.”

**Aishah Bibi,**  
Integrated Working with Children and Families

## You might also be interested in:

Research at Worcester including Dr Gabriela Misca's study looking at the long-term impact of Covid-19 on families.



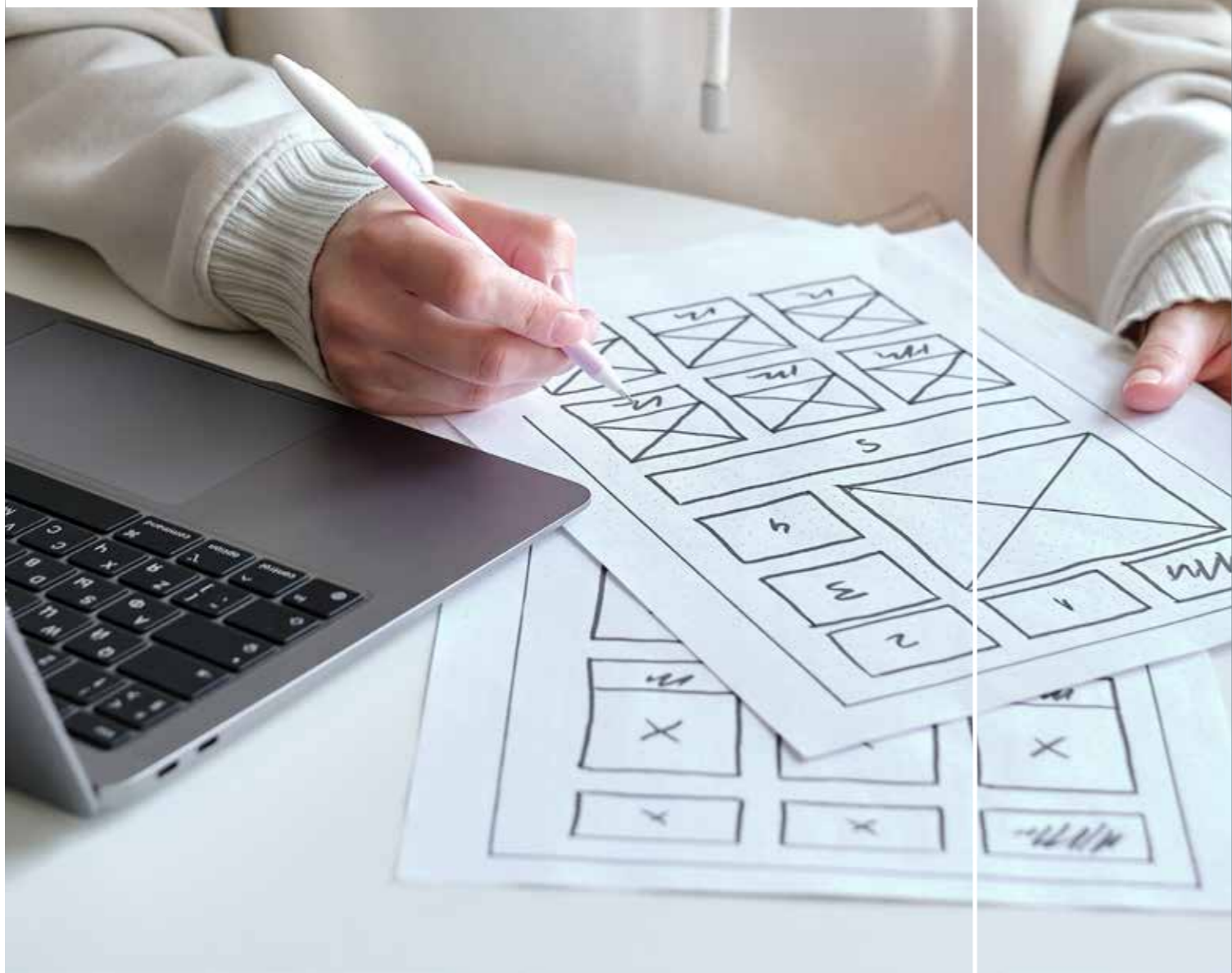
Explore online  
Scan to find the related content shown above.



## I CH♥SE WORCESTER

“The biggest attraction was the wide range of comprehensive modules I was able to select. This let me tailor my journey at the University to suit my interests and goals.”

Shane Kyte,  
Computing



# Computing

Our courses are designed in consultation with employers, aligned with industry standards and taught by experienced computing professionals.

### Available courses

Computing  
BSc (Hons)  
Computing  
Foundation Year  
Data Science  
BSc (Hons)  
Plus  
Joint honours combinations

At Worcester you'll develop the skills employers want, and you can learn them in a range of computing areas – from web design, programming and information systems to games development and drone technology.

Our students have previously undertaken placements with a range of companies, including Bosch, IBM and Clearview, and you can present your final-year project to industry representatives at our annual Computing Showcase.



Detailed information  
Scan for detailed course information and entry requirements.



## Careers advice and work experience

Reid is working as a software engineer for a company based in London and is living there with his partner, after they completed their studies together. Long-term, they hope to move to the United States and spend time living and working in San Francisco and New York.



### I CHOSE WORCESTER

“This work experience contributed directly to getting me through the interview process and into my current job. I am so grateful for the opportunity.”

During his final year Reid worked as a student demonstrator.

“I was drawn to study at Worcester by the range of modules and friendly atmosphere. The lecturers gave me a lot of great advice, and that led me to the career I am in.”

Reid Giles,  
Computing

You might also be interested in:

Computing student stories



Explore online  
Scan to find the  
related content  
shown above.



## I CH<sup>♥</sup>SE WORCESTER

**“I chose to study at Worcester because the course was exactly what I was looking for, something that explored all different styles of drama and theatre.**

**From the first Open Day I fell in love with the city and how beautiful it is, and I'm so glad to now call it home.”**

**Jordan Smith,**  
Theatre, Acting and Performance

# Drama and Performance

**Whether your ambitions are on stage or behind the scenes, our drama and performance degrees will give you the practical experience to start your career.**

### Available courses

- .....
- Dance Theatre BA (Hons) .....
- Musical Theatre BA (Hons) with Millennium Performing Arts .....
- Theatre, Acting and Performance BA (Hons) .....
- Touring Theatre MTheatre .....
- Plus .....
- Joint honours combinations

You learn theory through practice – in a wide range of venues, including our own drama studios and other local arts venues, or unusual spaces such as nightclubs or disused churches, festivals, outdoor spaces and gardens.

Our friendly community encourages you to join in with student societies such as Loco (musical theatre) and Spotlight (theatre), and 'Scratch Nights' where you can explore new ideas in front of an encouraging audience.



**Detailed information**  
Scan for detailed course information and entry requirements.

“If you keep your head straight, work hard and have a little bit of luck, you’ll get to do what you love for a living, and that to me is success.”

Laura Kane,  
Theatre, Acting and Performance



## Loving Life in Hollywood

After graduating from Worcester, Laura went on to complete a Master of Fine Arts: Acting for Film programme in Los Angeles. She’s now living in LA and working as an actor.



## I CHOSE WORCESTER

“I have so many fond memories of my time at Worcester. I used to love rehearsing in the Drama Studio, the lecturers were excellent, and the work we did on techniques and approaches to acting really opened up fresh new perspectives for me.

Socially I had a great group of friends too. We enjoyed playing movie nights together and playing football down on the racecourse, and of course there is Worcester itself – it’s a beautiful city.

My advice is to study hard and learn as much as you can in uni – you’ll be more prepared for the work you do once you’ve graduated.

Once you get that job, remember to stay open for more learning, as it never stops if you want to become a skilful actor. Be curious, and most importantly, no matter what your dream is, be brave and go after it.”

Laura Kane,  
Theatre, Acting and Performance

You might also be interested in:

Touring Theatre graduates perform at the Fringe Festival

Drama and Performance student stories



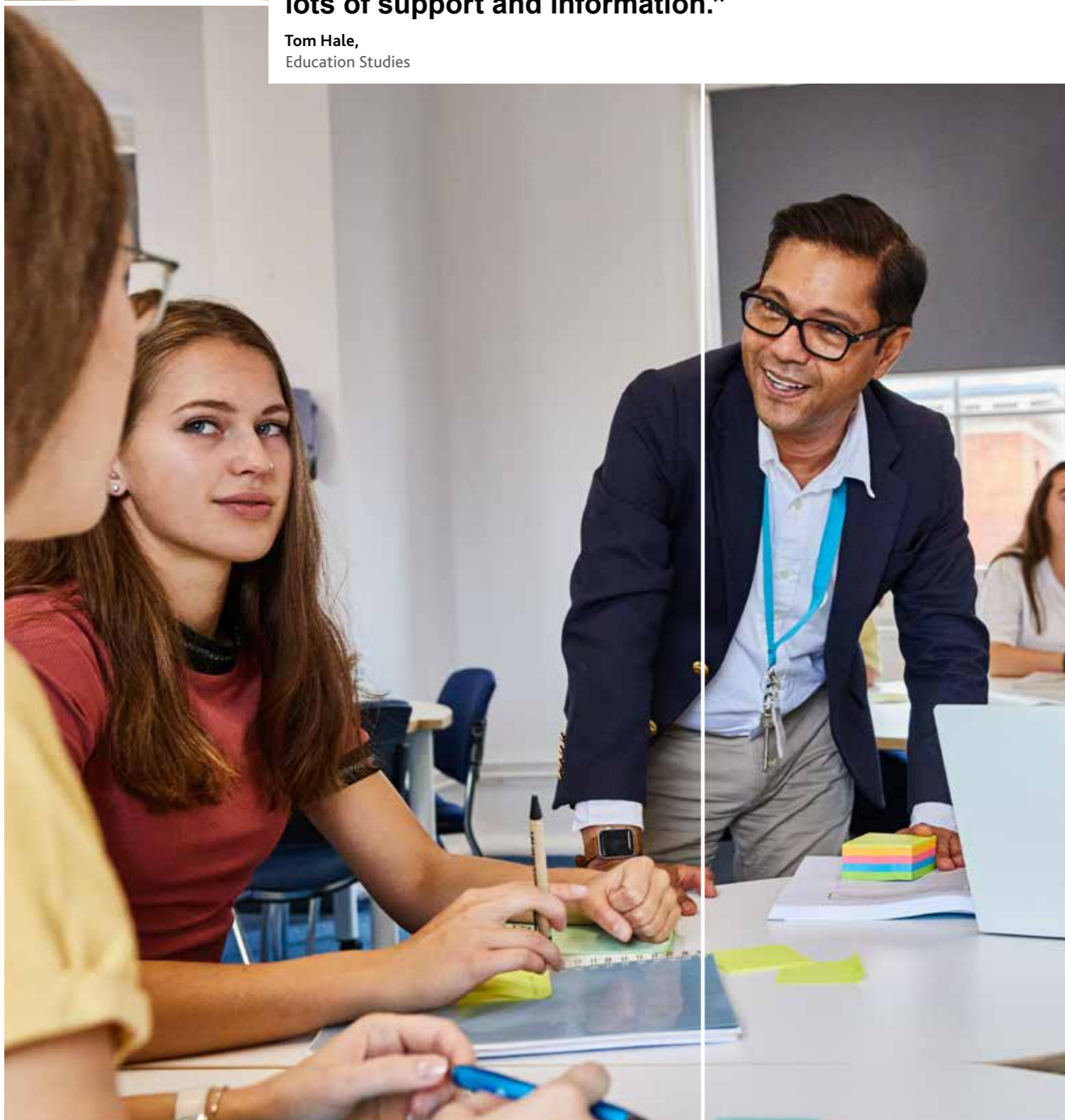
Explore online Scan to find the related content shown above.



## I CHOSE WORCESTER

“The course was brilliant and touched on lots of different areas of education, from the historical aspects to very up-to-date issues. I thought the tutors were brilliant and offered lots of support and information.”

Tom Hale,  
Education Studies



# Education and Inclusion

Our courses prepare you for a fantastic career in the highly rewarding education sector.

### Available courses

Advancing Practice  
BA (Hons) Top-up Degree

Education Studies  
BA (Hons)

Inclusive Education  
FdA

Learning and Education  
FdA

Learning Support  
FdA

Professional Practice  
BA (Hons) Top-up Degree

Special Educational Needs,  
Disabilities and Inclusion  
BA (Hons)

Teaching and Learning  
FdA

Plus  
Joint honours combinations

You'll explore key debates in education, including whether education is socially just, how it is influenced by race, gender and class, and how education can be made more inclusive.

At Worcester we offer the opportunity to specialise in a number of areas, including learning support and inclusive practice.



Detailed information  
Scan for detailed course information and entry requirements.





## Putting learning into action

Maisy, who lost her sight suddenly as a teenager, is now putting what she learned during her SENDI degree into action to support young people with special educational needs and disabilities.

Maisy took to the stage at graduation with her guide dog Willow accompanying her, and having finished her degree, she is now working in a specialist college as a Learning Support Assistant.



## I CHOSE WORCESTER

“I am learning so much, and it is truly wonderful to be able to see the things I learned during my degree working in a real-life setting.”

Watching the achievements of the students and recognising that the positive pedagogical approaches the University instilled within me working is so fulfilling.

I am so proud of the things I was able to achieve at university. I have so many people to thank, and so much to be grateful for.”

Maisy McAdam,  
Special Educational Needs,  
Disabilities and Inclusion (SENDI)



Explore online  
Scan to find the  
related content  
shown above.

# I CHOSE WORCESTER

"During my degree, I took a work placement module where I worked with the Irish Women's Writing Network as a Social Media and Marketing Co-ordinator. This experience enabled me to gain work as an Anthology Editor for Small Leaf Press.

I also took part in a 48-hour editing event providing feedback for aspiring and under-represented writers and have had an article published in Jaden magazine."

Amber Pettit,  
English Literature



# English, Media and Culture

Our degrees help you establish your own identity as a writer and critical thinker.

Through studying a diverse and stimulating range of modules you will encounter different media and styles. You'll learn to assess, analyse and critique, acquiring key skills for a variety of careers where effective communication is key.

At Worcester you'll become part of a rich and vibrant creative community with a number of active clubs and societies.

## Available courses

Creative Writing  
BA (Hons)

English Language  
(Joint Honours)

English Literature  
BA (Hons)

Film Studies  
BA (Hons)

Media and Culture  
BA (Hons)

Plus  
Joint honours combinations



Detailed information  
Scan for detailed course information and entry requirements.



“Studying English Literature at Worcester helped to hone my passion for reading. The team gives you a strong grounding in literary theory whilst introducing you to a diverse and challenging reading list spanning multiple forms, genres and centuries.”

## I CH<sup>♥</sup>SE WORCESTER

“In the third year of my degree, I completed a university internship at Ledbury Poetry Festival, the biggest poetry and spoken-word festival in the UK, where I met world-renowned authors, performers and agents.

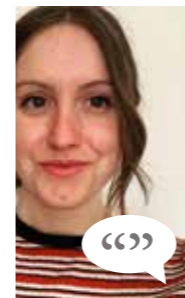
My experience at Ledbury, and the support and references from my lecturers, secured me a voluntary role as a guide at Shakespeare’s Birthplace and, later, a marketing internship at the Royal Shakespeare Company.”

Katie Harris,  
English Literature



## A creative and supportive environment

Following her undergraduate degree, Charlotte completed a Master’s in English at Worcester, and was then awarded a place on an exciting PhD programme to research the work of the American contemporary novelist Elizabeth Strout.



## I CH<sup>♥</sup>SE WORCESTER

“I’ve always been an anxious person and the idea of going to university had filled me with fear. Living in a rural village, and having only attended small educational institutions, I was looking for a university that offered the course I wanted and gave that rural, homely feel I needed.

I remember coming to an Open Day with my parents and instantly knowing that this was the right fit for me; I felt comfortable and welcomed.

The English department at Worcester has given me so much more than a degree. It has given me a confidence in my academic abilities; an incredible support system; and the chance to have fun and experiment with my work, to be creative and think outside the box.”

Charlotte Taylor,  
English Literature

### You might also be interested in:

What is a Poetry Slam? Dr Jack McGowan explores the art of spoken word

Professor Jean Webb looks at young adult sci-fi and its depiction of possible futures



Explore online  
Scan to find the related content shown above.

# I CH♥SE WORCESTER

“When I arrived on campus for one of the Open Days, I just instantly felt at home and couldn’t imagine wanting to be anywhere else.

My lecturers were so lovely and engaging, and really made me certain that this was somewhere I could flourish.”

**Genevieve Robertshaw Maidment,**  
Screenwriting with Film Production



# Film and Screenwriting

Our Film and Screenwriting degrees embrace all aspects of film – from documentary and fiction to artists’ filmmaking and critical writing.

## Available courses

Film Production  
BA (Hons)

Film Studies  
BA (Hons)

Screenwriting  
(Joint Honours)

From the beginning, you’ll become part of a close-knit creative team, embracing industry-standard ways of working.

You will have the opportunity to study in our purpose-built Digital Arts Centre, which includes a video studio, sound studio, individual edit suites and high-spec computer labs with the latest image manipulation, editing and post-production software.



**Detailed information**  
Scan for detailed course information and entry requirements.



## Film studies or production?

Film Studies is a critical discipline (similar to English Literature) where you study and interpret film, gaining a deep understanding of popular movies, art cinema and experimental film.

Film Production is all about developing the skills and experience needed to create films yourself and as part of a team. At Worcester you can study these subjects separately or as a joint honours degree.



## Realising potential

After graduating with a degree in Film Production, Emlyn is now working at the University as a video creator.



## I CHOSE WORCESTER

"I think working in the film industry is about having a combination of qualifications and good experience. During my degree, I had lots of specialist, hands-on projects with prop-making and set building. This was backed up with plenty of online resources and we were encouraged to connect with like-minded classmates to make short pieces for social media.

One of my lecturers secured me a place on a freelance project and I spent a week producing a music video. I'm now working in a professional filming and editing role, which is really exciting."

Emlyn Wilcox,  
Film Production

## You might also be interested in:

Film Studies lecturer Mikel Koven explores fairy tales' dark and twisted roots, far away from what you've seen in Disney films

Student experiences on becoming part of the screenwriting community



Explore online Scan to find the related content shown above.



## I CH<sup>♥</sup>SE WORCESTER

“I currently work for one of the world’s most respected design, engineering and project-management consultancies as an Environmental Scientist within the Contaminated Land and Hydrogeology team.

I joined as a graduate on the graduate-development programme. My degree at the University of Worcester made all this possible. I developed skills in report-writing and the ability to analyse data that are paramount to my day-to-day job and the degree gave me a broad understanding of the environmental sector.”

Jessica Jones,  
Geography and Environment

# Geography and Environment

Our courses explore some of the critical local and global challenges of this century, such as climate change, globalisation and sustainable development.

Smaller class sizes allow you to develop an extensive range of field, laboratory and GIS skills – complemented by excellent access to a wide range of cutting-edge equipment. This applied approach places our graduates in a great position when they start their careers.

### Available courses

- Environmental Management and Sustainability BSc (Hons)
- Environmental Management and Sustainability with Foundation Year BSc (Hons)
- Environmental Management and Sustainability with Placement Year BSc (Hons)
- Geography BSc (Hons)
- Geography with International Year Abroad BSc (Hons)



Detailed information  
Scan for detailed course information and entry requirements.



## Fieldwork opportunities

At Worcester, fieldwork is central to our approach to teaching and research in Geography and Environment.

Part of what makes Worcester an exciting place to study is the fact that we're fortunate enough to be located in one of the most beautiful and geographically interesting parts of the country.

There are more than 100 Sites of Special Scientific Interest in Worcestershire alone, including the famous Malvern Hills, meaning that we have extensive opportunities on our doorstep to put theory into practice through innovative fieldwork and practical sessions.

There may also be opportunities to take part in field trips further afield – for the latest information, please visit our course pages on the website.

Fieldwork is embedded throughout our degrees, which is important because it provides frequent opportunities to apply and extend knowledge and skills in the real world. As well as being essential preparation for employment and further study, it can be hugely enjoyable!

### You might also be interested in:

How research informs teaching – Dr Alan Dixon discusses his research on sustainable development

Watch videos of our past field trips



Explore online Scan to find the related content shown above.



### Professional placements

"In my third year I took a professional placement module and completed my work experience at the Environment Agency, where I was able to use knowledge from my degree in a real working environment.

**I found myself using equipment I had already experienced using in my course, which was very helpful. On this placement I gained skills, both personal and professional, that will benefit me throughout my career."**

Eleanor Kendrick,  
Geography



## I CHOSE WORCESTER

Eleanor chose Geography at Worcester because of the sense of community she felt when visiting at an Open Day.

"My personal academic tutor helped me to settle in with regular informal chats to see how I was getting on, which I really valued, especially in my first year. I felt really supported at Worcester and never felt I was just another face in the crowd."





## I CH♥SE WORCESTER

**“Having no prior experience in this field, placements were vital in helping me gain relevant experience, develop excellent communication and people skills, and boost my confidence overall.**

Completing the foundation degree enabled me to successfully apply for the Mental Health Nursing BSc (Hons) course here at Worcester. I am now qualified and enjoying my new job as a Staff Nurse in CAMH inpatient services.”

Neil Donnell,  
Child & Adolescent Mental Health

# Health and Wellbeing

**Health and Wellbeing at Worcester blends high-quality teaching with practical work-based learning to create adaptable and skilled health, wellness and social care professionals.**

We are devoted to providing engaging learning opportunities, creating practitioners who work within a range of different settings.

An expansive range of course content means that you can specialise in the discipline that suits your future plans, including health, wellness and social care or mental health.

### Available courses

- Applied Health and Social Care BA (Hons) Top-up Degree
- Child & Adolescent Mental Health FdSc
- Child & Adolescent Mental Health BSc (Hons) Top-up Degree
- Counselling FdSc
- Health and Social Care FdSc
- Health and Wellbeing in Society FdSc
- Healthcare BSc (Hons)
- Healthcare Foundation Year
- Integrative Counselling BA (Hons)
- Integrative Counselling FdA
- Mental Health and Wellbeing of Children and Young People FdSc



**Detailed information**  
Scan for detailed course information and entry requirements.





Melanie graduated with a degree in Child and Adolescent Mental Health. This course prepares graduates for a range of roles in support services and communities for children and young people.

**“I’ve gone on to study for a PGCE teaching qualification as I want to become a Special Educational Needs Co-ordinator in a school.**

Worcester gave me an opportunity to study an area of interest and one that will continue to be a big element of teaching for years to come.”

Melanie Harrison,  
Child and Adolescent Mental Health



## Opening up a range of career opportunities

Seweryn studied on our Health and Social Care foundation degree through Herefordshire and Ludlow College.



**I CHOSE WORCESTER**

**“I am now working for Adult Social Care as an Assessment and Enablement Officer. I feel that in this role I am able to use my skills and knowledge from the course to continuously develop myself professionally.”**

Seweryn Szaja,  
Health and Social Care



**“I would really recommend this course for anyone who is looking to build up their skills and knowledge in Health and Social Care.”**

Seweryn Szaja,  
Health and Social Care

You might also be interested in:

Dr Tanya Carpenter offers her thoughts on maintaining psychological wellbeing

How can you make meaningful life changes that stick?



Explore online Scan to find the related content shown above.

## I CH<sup>♥</sup>SE WORCESTER

“I feel that the subject is incredibly necessary and has provided me with a deeper understanding of the structures which underpin everyday life, as well as a greater awareness of the world in general.

Rebecca Adams,  
Sociology

Whether through societies, socials or just classes, there was always a feeling of being part of something, and I have left university with not only the degree I came for, but some lifelong friends that have helped me more than I can express in words.”



# History, Politics and Sociology

Our History, Politics and Sociology degrees encourage you to see the world from different perspectives, discuss new ideas and think beyond the obvious.

### Available courses

- History  
BA (Hons)
- Politics Degrees
- Sociology  
BA (Hons)
- Plus  
Joint honours combinations

You'll learn in small, informal groups, which means you'll get a lot of individual support in a relaxed and friendly atmosphere.

You'll also benefit from the opportunity to go on work placements and the chance to get involved in active research. This combination of real-world experience and academic skills puts you in a great place for your future career.



Detailed information  
Scan for detailed course information and entry requirements.

# I CHOSE WORCESTER

“The lecturers were really inspirational, and the seminars they put on were engaging and thought-provoking. In my final year, I really made the most of the support on offer, with regular meetings to help with research, and thanks to this I was able to win the Stanford History Prize and get a First.”

Abi Leyland,  
History



## History graduate now teaching challenging historical topics to children

Abi studied History BA (Hons) before training to teach, both at Worcester. Abi now teaches history at a local high school, where she is responsible for the development and delivery of the Key Stage 3 curriculum.

Abi came back to Worcester to give a presentation to current final-year History students on some of the issues that might arise when teaching troubling events of the past, particularly the transatlantic slave trade.



# I CHOSE WORCESTER

“History at the University of Worcester set me up with the knowledge and skills to succeed in my teaching career. The opportunity to be at the forefront of cutting-edge research as part of the Atlantic Slave Trade module enabled me to develop this as part of our curriculum.”

I really enjoyed how customisable the History course at Worcester was; there was a lot of flexibility in the topics you could study, which meant I was able to create a course that was right for me.”

Abi Leyland,  
History

## You might also be interested in:

Why does the devil have such an appeal?

Professor Darren Oldridge explains why

What is Sociology? Find out in our Academic Blog



Explore online Scan to find the related content shown above.



# Journalism and Digital Media

You'll be equipped with the skills and experience needed to thrive in the modern media industry.

## Available courses

Digital Media Production  
BA (Hons)

Journalism  
BA (Hons)

Plus  
Joint honours combinations

## I CH<sup>♥</sup>SE WORCESTER

“One of the biggest opportunities is the Degree Show at the end of the course. Being able to showcase your work in front of many people and companies is key to a potential career.

An industry creative spotted my work at the show and now I am a Junior Designer at the Midlands' biggest digital agency.”

Georgi Chalakov,  
Digital Media Production



With live briefs and practical sessions at the heart of these courses, you'll learn a huge range of relevant skills.

You'll join a friendly and creative community of students, lecturers and technicians based in our Digital Arts Centre. The industry-standard facilities feature Mac suites, study areas and specialist studio spaces for the creation of video, photography, visual effects and sound.



Detailed information  
Scan for detailed course information and entry requirements.



## I CHOSE WORCESTER

“During my time at Worcester, I’ve made a magazine, presented the news, interviewed politicians and been published on several websites. My lecturers managed to create an environment where I always felt I was progressing and learning new skills.

I used to be terrified by a lot of social interactions and I now feel confident in front of a camera or asking someone for an interview. These are skills that I know will be invaluable in any workplace.”

Sam Bullock,  
Journalism



## What I learned from my Journalism degree

When Sam began studying Journalism at Worcester they thought they knew what to expect. These expectations were quickly dispelled.



## I CHOSE WORCESTER

“Before the course I feared I would be left to work on my own. This couldn’t be further from the truth. From day one, my course-mates and I were encouraged to share ideas and resources; we helped each other write and develop each other’s stories.

I also thought that being a good writer was the only thing I would need to get my dream job. I quickly learned that this was not the case.

**Lecturers trained us in all aspects of modern journalism, from operating a £2k camera and audio recording, to presenting the news and writing for social media.”**

Sam Bullock,  
Journalism

## You might also be interested in:

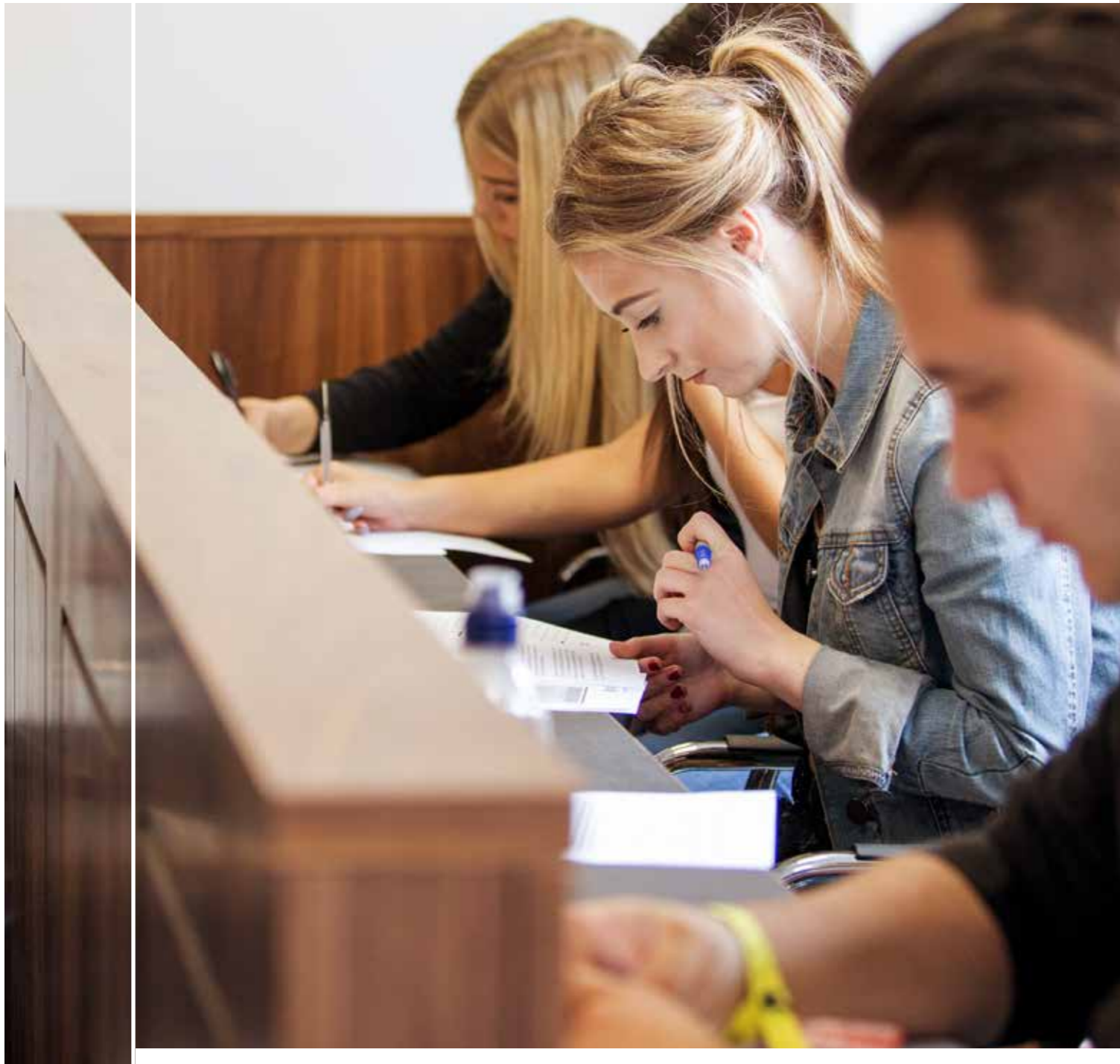
View final-year work at the Worcester Degree Show

Four things I wish I knew as a first-year Journalism student

Digital Media Production students work in the community as part of their Immersive and Sensory Design module



Explore online  
Scan to find the related content shown above.



# Law, Criminology and Policing

**Purpose-built facilities, including our own courtroom, help you get used to working in the legal environment.**

## Available courses

- .....
- Criminology  
BA (Hons)
- .....
- Criminology with Policing  
BA (Hons)
- .....
- Criminology with  
Forensic Psychology  
BA (Hons)
- .....
- Criminology with Politics  
BA (Hons)
- .....
- Law  
LLB (Hons)
- .....
- Law with Criminology  
LLB (Hons)
- .....
- Law with Forensic Psychology  
LLB (Hons)
- .....
- Law with Politics  
LLB (Hons)
- .....
- Professional Policing  
BA (Hons)
- .....
- Plus  
Joint honours combinations

## I CH♥SE WORCESTER

**“Because the University isn’t too big I felt like a person rather than a number, and the staff were interested in getting to know each student personally. Worcester felt like more of a community or family.”**

**Ella Mansfield,**  
Criminology with Policing

At Worcester, smaller teaching groups mean you develop close working relationships with your lecturers. You can volunteer to work with practising solicitors in our Legal Advice Centre, gathering details from real clients on real cases and learning from the advice they receive.

We also have excellent links with local law firms and police forces to give you work experience opportunities where you can learn about law and criminology in context.



**Detailed information**  
Scan for detailed course information and entry requirements.



## I CH♥SE WORCESTER

“It was the most rewarding experience of my life. Being able to work on real-life cases and support officers was incredible. I learnt so much from this opportunity and it has made me a more outgoing and confident person.”

Ellie Roissetter,  
Law



**Most Satisfied University Law Students in the country**

National Student Survey 2022

**Third for Law graduate prospects, after Oxford and Cambridge**

The Complete University Guide 2023



## Inspired by a volunteering experience

Ellie volunteered for West Mercia Police Criminal Investigation Department (CID) during the second and third years of her Law degree. Now as a graduate she is working in West Mercia's Victim and Witness Care Unit, which supports victims and witnesses through the court process once a person has been charged with a crime.

Inspired by the volunteering experience, Ellie hopes to one day work in CID.



## I CH♥SE WORCESTER

“Studying for my Law degree allowed me to understand the different types of offences which may occur. It also trains your mind to think like a lawyer, which can be helpful when determining what evidence you think will make a case successful at trial and whether you think you may have enough evidence to take a case to court. I am hoping all of this will help me become a better and more well-rounded officer when I apply for CID.”

**Each and every one of the Law team at Worcester is outstanding and goes the extra mile to help you in any way they can. They are truly a credit to the University and are some of the most amazing people I have ever met.”**

Ellie Roissetter,  
Law

You might also be interested in:

Lecturer Nicola Monaghan explores jury tampering and what it means in the criminal justice system

Law LLB student Olivia takes us through her favourite modules



Explore online Scan to find the related content shown above.

# I CH<sup>♥</sup>SE WORCESTER

"My Personal Academic Tutor has been fantastic. She's challenged and supported me in my studies, and she's always happy to chat things through."

**All the lecturers genuinely want to get to know you and help you, and I think having smaller classes really helps – as the sessions always feel personal and relevant."**

Imogen Smith,  
Criminology with Policing



**"The opportunity to do volunteering with West Mercia Police has been incredible."**

You get to learn and experience things first hand, and instead of sitting in a classroom taking notes, you get to see how things are done and ask questions."

Amelia Flanner,  
Criminology

"Lecturers are knowledgeable and enthusiastic and have experience working in the relevant fields, so their personal experiences can be applied to the topic. They're also super approachable and supportive! There are many opportunities to think about your future career."

**Guest lecturers often come in and talk about their role and career, and there are lots of volunteering opportunities which give you insight into the criminal justice system."**

Ariana Meadows,  
Criminology



Explore online  
Scan to find the  
related content  
shown above.

**You might also be interested in:**

Studying Criminology as part of a joint honours degree

Reading about your future Criminology and Policing lecturers



## I CH<sup>♥</sup>SE WORCESTER

“I think my favourite module has probably been human anatomy and physiology or neuroendocrinology. The lecturers for those modules were very passionate about what they were teaching, which was great.”

Eleanor Hinton,  
Biomedical Science



# Medical Sciences

Discover the science that underpins medicine and human health.

### Available courses

- Biomedical Science  
BSc (Hons)
- Dental Technology  
FdSc
- Diagnostic Radiography  
BSc (Hons)
- Medical Sciences  
BSc (Hons)
- Medicine  
MBChB
- Physician Associate  
MSc

At Worcester we focus on career development throughout your course. Staff from scientific and clinical fields will support you to develop key transferable skills, whilst enhancing your understanding of the healthcare industry.

These courses are ideal preparation if you are considering further training to be a medical doctor, registering as a qualified biomedical scientist, or pursuing a different career within medicine.



Detailed information  
Scan for detailed course information and entry requirements.



## Moving seamlessly from degree to career

Hollie studied Biomedical Science and is now continuing her training with the Haematology and Transfusion Pathology department at Gloucestershire Royal Hospital where she is completing her Institute of Biomedical Science (IBMS) Registration Portfolio.



## I CHOSE WORCESTER

"When attending Open Days, I found all the staff to be very friendly and more than happy to help with any queries I had."

I was drawn in by the smaller classes, as at the time I struggled with science and maths and therefore liked the idea that if I was struggling, somebody would be happy to point me in the right direction.

I am thankful that I took the plunge and applied for the Biomedical Science course because it meant I learnt so much, met some great people and gained really useful skills. Without completing my degree, I would not be able to follow the career path I have today and would have missed out on some of the best opportunities of my life."

Hollie Fawke,  
Biomedical Science

## You might also be interested in:

- Virtual tour of the labs
- Second year Biomedical Science student Amy shares five things that may surprise you



Explore online  
Scan to find the related content shown above.



## New Medical School, new opportunities

The creation of the Three Counties Medical School at the University of Worcester opens the opportunity for you to train to be a medical doctor within the region.

Building on our experience training high-quality, effective and compassionate health professionals in nursing, midwifery, physiotherapy, occupational therapy and paramedicine, our new MBChB (Bachelor of Medicine and Bachelor of Surgery) is a four-year, graduate-entry programme that will prepare you to be a compassionate, highly skilled doctor able to pursue any specialism you choose.

From your first weeks as a medical student at Worcester you will be part of patients' individual healthcare journeys.

You'll spend much of your time in general practice learning medicine in the community alongside patients, as well as studying on campus. You'll work closely with primary care teams, consultants and allied health professionals during a series of projects and placements – in general practice, outreach clinics, community hospitals and care facilities.

You will also spend time in acute hospitals – for example on medical and surgical wards, from specialised cancer treatment centres and psychiatric in-patient units to labour wards and research laboratories.

## The £16 million Three Counties Centre for Health and Wellbeing is home to the Medical School.

Located on the University's new Severn Campus, ideally situated between the city centre and the St John's Campus, the riverside facility includes a specialised anatomy skills room using high-fidelity models for visualisation of anatomy, pathology and physiology; a simulated GP surgery with a suite of consultation rooms; technology for viewing and feedback space; and easily dividable units for Objective Structured Clinical Examinations.

## You might also be interested in:

Our vision for the Three Counties Medical School

Our new £16 million Centre for Health and Wellbeing



Explore online Scan to find the related content shown above.



# Midwifery

Our popular Midwifery course has an excellent reputation with employers throughout the region.

### Available courses

- Midwifery BSc (Hons)
- NCT Perinatal Education and Practice
- CertHE

## I CH<sup>♥</sup>SE WORCESTER

“Working in small groups, our student midwives get used to the idea of multi-disciplinary team working but also independent working, which is really great when they go out into clinical practice.”

Dr Lucy Hope,  
Senior Lecturer

Through a mix of clinical practice placements and quality teaching, you'll be equipped with the skills and experience needed to become a confident and caring midwife.

You'll also develop the intellectual tools to help you shape the future direction of the profession by generating new ideas and evaluating innovative ways of working.



Detailed information  
Scan for detailed course information and entry requirements.



## I CH♥SE WORCESTER

“I find it really useful that placements are half of our University experience; it means that you’re able to take your theoretical knowledge and put that into practice.”

Lindsay Hill,  
Midwifery



## Practical placements

Emphasis is on learning in diverse, supportive practice learning environments, with 50% of the course embedded in practice. Lindsay did one of her placements at the Meadow Birth Centre at Worcestershire Royal Hospital. This is a midwife-led centre with a suite of homely birthing rooms, offering mothers more choice over where their baby is delivered.



## I CH♥SE WORCESTER

“The University works really closely with the local Trusts which means that we have really good learning experiences. It’s well organised and you know where you’re going and whom you can turn to.”

Lindsay Hill,  
Midwifery



### You might also be interested in:

Virtual tour of our Clinical Skills facilities

Watch Midwifery students and lecturers talk about the course

Professor Lisa Jones discusses her research into postpartum psychosis



Hear from our students and see them on placement.

# I CHOSE WORCESTER

**“Worcester had a smaller, tight-knit community feel to it and all the lecturers were so passionate about nursing and had reams of experience. Choosing to study here was an easy decision.”**

Olivia Handley,  
Adult Nursing



# Nursing

**The success of our graduates, passionate lecturers and strong links with regional Trusts mean we have an excellent reputation for nursing education.**

A big part of this success is our 'skills weeks', where simulations will help you prepare for your placements by applying nursing theory to nursing practice.

We've designed our degree collaboratively with practice partners, service users and students, so you'll develop the skills needed to thrive in a continually evolving profession.

This is one of the reasons why we have been shortlisted for Best Student Experience in the Student Nursing Times Awards 2022 and have also been a Student Nursing Times finalist for "Nurse Education Provider (Pre-Registration) of the year" seven times in recent years.

## Available courses

- Adult Nursing  
BSc (Hons)
- Children's Nursing  
BSc (Hons)
- Mental Health Nursing  
BSc (Hons)
- Nursing  
Associate Apprenticeship
- Nursing Associate  
FdSc
- Return to Nursing  
Practice



**Detailed information**  
Scan for detailed course information and entry requirements.



## Setting up a national support network

Ricky set up a nationwide peer support network dedicated to student children's nurses, alongside studying for his degree in Nursing. He set up the Children and Young Person Student Nurse Network on social media, alongside a fellow student nurse, as part of his work on the Council of Deans Student Leadership Programme.

Ricky is now working as a Children's Nurse at Wye Valley NHS Trust.

**I CH♥SE WORCESTER**  
“...because I felt they could make me the best nurse I could be.”



I really enjoyed the skills and simulation weeks and all the support I had out on placement was brilliant.”

Brooke Evans,  
Adult Nursing



**I CH♥SE WORCESTER**

“The University has presented me with many opportunities and from these I have had such fulfilling and enriched learning experiences, which have inspired and encouraged me to make a difference as a student nurse, and to this day, influence positive change and showcase initiative within nursing.”

Ricky Baker,  
Children's Nursing

You might also be interested in:

Watch student interviews and demonstrations of clinical skills in Nursing

See our Nursing facilities



Hear from our students and see them on placement.



## I CH♥SE WORCESTER

“Every week is different, every placement is unique, but what stays the same is the dedication by the lecturers who are, or have been, paramedics. Joining the University of Worcester has been the best decision I’ve ever made.”

Abbie Dowden,  
Paramedic Science

# Paramedic Science

Our mission is to develop your skills and confidence so that you’re equipped to deliver high-quality patient-centred care.

Available courses  
Paramedic Science  
BSc (Hons)

On your journey to becoming a qualified paramedic, you’ll learn from our team of dedicated staff and practice partners – including the West Midlands Ambulance Service – as well as a range of specialist guest speakers.

Practice placements are a key part of each year of the course, so you’ll immediately be able to apply the skills and knowledge you’re learning.



Detailed information  
Scan for detailed course information and entry requirements.



## Emergency response

Matthew worked with West Midlands Ambulance Service as a student paramedic, responding to 999 calls and supporting the NHS during the pandemic.

Matthew has now started his career as a paramedic with Southwest Ambulance Service. He plans to continue with education and get a Master's degree, and eventually work towards a doctorate in the field of Critical and Emergency Care. In addition to this, he hopes to achieve his dream job as a Critical Care Paramedic working for the Helicopter Emergency Medical Service.



## I CHOSE WORCESTER

"I gained invaluable experience, increasing my confidence level when helping people at their most vulnerable.

**I am over the moon that I am now able to progress into a career as a paramedic, helping people in time of need, as that's always been my life ambition.**

At Worcester I really benefited from the University's support for students."

Matthew Speirs,  
Paramedic Science

## Working on the NHS frontline during the pandemic

Jennifer has joined West Midlands Ambulance Service after completing her degree in Paramedic Science. She is one of numerous students who put themselves forward to work on the frontline at the height of the Covid-19 pandemic.



## I CHOSE WORCESTER

"The start of the Covid-19 pandemic coincided with my second year at university. West Midlands Ambulance Service called for additional support to relieve the pressure within the emergency service.

First, I was given the opportunity to assist in frontline vehicle preparation. This involved ensuring vehicles and equipment were consistently accessible, clean and replenished for the start of the paramedics' next shift. After a couple of weeks, this job role then progressed to a further opportunity of assisting West Midlands Ambulance Service on the frontline by working as an Ambulance Clinical Assistant (ACA), working alongside a paramedic.

**This was a daunting experience at first, but I believe it's pushed me to become a stronger paramedic.**

I originally chose to study Paramedic Science at the University of Worcester due to its strong links with the West Midlands Ambulance Service, along with the high-quality facilities."

Jennifer Wilmott,  
Paramedic Science

## You might also be interested in:

Graduate Natalie Greaves talks about her placement with the West Midlands Ambulance Service

Life as a volunteer paramedic – read our student blogger's experience



Hear from our students and see them on placement.



## I CH♥SE WORCESTER

**“Practical placements and volunteering gave me all the experience I needed to be a successful occupational therapist.”**

The course offered opportunities to connect with and learn from different NHS services, charities, service users, and practising occupational therapists. Because of this I was able to secure a rotational post within community mental health settings before I'd even graduated.”

**Chloe Thomas,**  
Occupational Therapy

# Physiotherapy and Occupational Therapy

**You'll develop your clinical skills through work-based learning and our excellent facilities, including Ability House, our on-site simulation centre.**

### Available courses

Occupational Therapy  
BSc (Hons)

Physiotherapy  
BSc (Hons)

Our Physiotherapy and Occupational Therapy degrees equip you with the skills and experience to support others to live the life of their choice. Both disciplines play an important role in injury prevention, health and wellbeing, and at Worcester you gain real understanding of the inter-disciplinary nature of the health sector.

Our excellent links with therapists throughout the region ensure the course content is professionally relevant and placements are varied and well supported.



Detailed information  
Scan for detailed course information and entry requirements.



## Developing therapy skills and experience, in combination with leadership and teamwork.

Ecem, who is now a Lead Physiotherapist within East London NHS Foundation Trust, looks back fondly on her time studying at Worcester.



### I CH<sup>♥</sup>SE WORCESTER

“Having the opportunity to study Physiotherapy at Worcester helped me gain skills to develop both in my career and as an individual, especially through the course’s emphasis on leadership.

As an active learner, the unique structure of the part-time placements allowed me to put my learning into practice in a range of settings, from NHS to private.

The inter-professional environment of learning has provided me with invaluable teamwork experience which I have been able to carry over to my work. To make the experience even better, we were given a wonderful opportunity to complete our final placement in Vietnam, which allowed me to enhance my

communication and life skills on top of working in a completely new and unconventional setting out of my comfort zone.

I have been able to use all these skills in my current role. Throughout the variety of other rotations I have worked in, my role always involves promoting independence and improving the quality of life of our service users, as well as developing the service itself.”

Ecem Komur Yonten,  
Physiotherapy

### You might also be interested in:

What is Occupational Therapy? Watch our quick explainer video

Read Asli’s ‘Five unexpected things about my Physiotherapy degree’ blog



Explore online Scan to find the related content shown above.

## I CH♥SE WORCESTER

“Throughout my studies, the opportunity to select various modules allowed me to pursue and refine my interests within the broad field of psychology.”

Jade Russell,  
Counselling Psychology

I was able to work alongside my lecturer on her ongoing research endeavours, which provided me with practical skills and knowledge of real-world research.”



# Psychology

Our courses are designed to develop you as the psychologist of the future, in whichever field you choose to specialise.

### Available courses

Business Psychology  
BSc (Hons)

Clinical Psychology  
BSc (Hons)

Counselling Psychology  
BSc (Hons)

Forensic Psychology  
BSc (Hons)

Health Psychology  
BSc (Hons)

Psychology  
(Joint Honours)

Psychology  
BSc (Hons)

Sport and Exercise  
Psychology  
BSc (Hons)

You'll be encouraged to use psychological theories to address real-world issues – such as the role of AI in the workplace, or tackling global pandemics.

We're committed to experiential learning, and our innovative 'assessments for life' are designed to reflect the skills that employers value. All single honours courses are also accredited by the British Psychological Society (BPS), putting you in a great position when you're starting your career.



Detailed information  
Scan for detailed course information and entry requirements.

# I CHOSE WORCESTER

Abbi secured a job shortly after completing her degree, as a Trainee Education Mental Health Practitioner within the NHS.

**“I knew that I wanted to put theory into practice, and now work full-time, doing what I love, in a job where I can keep learning. This for me is a dream job and definitely one of my aspirations. Thinking to the future, I would love to help supervise new trainee Education Mental Health Practitioners, as it is a trailblazer project in Worcestershire.”**

Abbi Sheen,  
Clinical Psychology



# Psychologists of the future

After graduating with a degree in Psychology, Matipa worked in the NHS to gain clinical experience and pursue his goal of becoming a Clinical Psychologist. He has now accepted a place on a Clinical Psychology Doctorate programme, which will make him a professional Clinical Psychologist.



# I CHOSE WORCESTER

“It all started with the decision to go to the University of Worcester. The Hive library had all these excellent resources to help navigate my way around the course and support me with my assignments.”

**The course team was excellent and I certainly would not be where I am today without that unwavering support.**

I never felt alone at Worcester and the team helped me achieve my ambition. In particular I will never forget my tutor telling me to aim higher than an upper second class and go for first-class honours, which I managed to achieve!

Not only is the Psychology course and team fantastic, but the city of Worcester is stunning! The course changed my life for the better and has helped me achieve things I did not think would be possible.”

Matipa Katsukunya,  
Psychology

## You might also be interested in:

Dr Tim Jones explores the science of attraction and asks – What’s love got to do with it?

Dr Laura Simmons talks us through stress, our response to it and how we can learn to cope better with the inevitable stress in our lives.



Explore online  
Scan to find the related content shown above.



# Social Work

If you want an in-demand career that lets you make a real difference in the world, there's never been a better time to become a social worker.

## Available courses

Social Work  
BA (Hons)

## I CH♥SE WORCESTER

“A highlight was travelling to Malta to work in adult mental health for five months. It was an experience I'll never forget.”

Alizah Pervez,  
Social Work

Our course delivers a professional qualification combined with an academic degree. During your training, you will divide your time between studying and supervised work placements to provide you with the relevant skills, knowledge and experience to succeed.

We seek to include service users, practitioners, carers and managers from across the social work arena throughout the course, ensuring your learning experience is firmly rooted in the real-world dynamics of the profession.



Detailed information  
Scan for detailed course information and entry requirements.



## Making a difference on placement

Louise is a family social worker and CPVA (Child to Parent Violence and Abuse) lead at The Sandycroft Centre, a well-established provider of a range of services including support for well-being and mental health, as well as for domestic abuse victims.

Louise went on a placement at The Sandycroft Centre while studying her Social Work degree at Worcester. It was during this placement that she was given the opportunity to develop a service to help people affected by a specific form of domestic abuse.

The Eve Project was created to encompass the many different forms of domestic abuse individuals, children and families experience. Within this, Louise has set up a Child to Parent Violence and Abuse (CPVA) service.



## I CHOSE WORCESTER

"The Eve Project is a holistic domestic abuse service, to which all members of a family who are experiencing CPVA can come for support and understanding. Parents are sometimes met with disbelief from professionals that they are being abused by their child, so to have somewhere to go where they are believed removes the first level of oppression.

As a mature student with children and dyslexia I would have been happy to just pass, so getting a first was amazing. It has boosted my confidence and shows other students that have specific learning difficulties that anything is possible."

Louise Lyson,  
Social Work

### You might also be interested in:

Social Work students discussing their experience of practice placements

Social Work and Community student stories



You'll develop your social work skills in a range of situations and environments, for example by undertaking mock home visits and assessment interviews within Ability House – our on-campus home environment simulation – or by doing court skills training in our very own Court Room.



Explore online Scan to find the related content shown above.



## I CHOSE WORCESTER

**“The course provided me with the opportunity to undertake several work placements at elite clubs, an experience that strengthened my interest in the field.**

The course provided me with the technical skills and practical experience within the industry to be good at the job, and ultimately to pursue a career as an analyst.”

**Jonathan Pickering,**  
Sport and Exercise Science

# Sport

With outstanding facilities, including the landmark University Arena, and passionate, friendly lecturers, Worcester is the perfect place to become a skilled sports practitioner.



**Detailed information**  
Scan for detailed course information and entry requirements.

### Available courses

- Cricket Coaching and Management  
(Integrated Masters or BSc)
- Exercise and Wellness Management  
BSc (Hons) Top-up Degree
- Exercise and Wellness Management  
FdSc
- Football Business Management and Coaching  
FdSc
- Outdoor Leadership and Adventure Sports Coaching  
BSc (Hons)
- Physical Education  
BSc (Hons)
- Physical Education and Sports Coaching  
BSc (Hons)
- Sport and Exercise Science  
BSc (Hons)
- Sport Business Management  
BA (Hons)
- Sport Development and Coaching  
BA (Hons)
- Sports Coaching and Physical Education  
FdSc
- Sports Coaching  
BSc (Hons)





## Leading the way on inclusive sport

New facilities, opened in 2023, join the award-winning University of Worcester Arena and the adjoining Riverside building in creating an outstanding, exciting new Severn Campus, dedicated to Health, Wellbeing and Inclusive Sport.

Plans are underway for a new, world-class International Inclusive Cricket Centre to join the Severn Campus too.



**“This is an extremely exciting development, bringing together the cricket world’s leading disability programme and the globally acknowledged academic leader in inclusive sport.”**

Ian Martin,  
Head of Disability Cricket at the England Cricket Board



**“The development of the Severn Campus builds on our outstanding work to educate students to work in a variety of sport, health and wellbeing professions.”**

Lerverne Barber,  
Head of the School of Sport and Exercise Science

## Training coaches of the future

Charlie studied Sports Coaching and is now working at the John Madejski Academy and Reading Rockets as a full-time basketball coach. He hopes to continue to develop as a coach and positively impact as many players as possible.



### I CHOSE WORCESTER

**“I feel extremely appreciative to have had such supportive and understanding lecturers and to have been given the practical opportunities that I have had over the past three years.**

This includes coaching with Basketball Wales and the University Basketball programme, and being involved in the Worcester Wolves setup.”

Charlie Haynes,  
Sports Coaching

Daniel played for Worcester Wolves in the BBL for several seasons whilst studying Sport Business Management.

**“It was a constant learning process where I was greatly supported by all tutors and staff. I’ll never forget my time at Worcester, which is filled with only positive memories.”**

Daniel Johnson-Thompson,  
Sport Business Management



**You might also be interested in:**

Dr John Francis discusses performance analysis in elite disability sports

Dr Andy Renfree examines the challenges athletes face now and in the near future

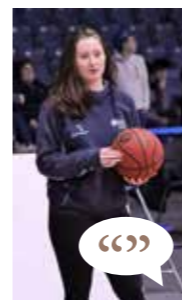


Explore online Scan to find the related content shown above.



## Outdoor activities and sports at our Lakeside Campus

Lakeside Campus is the perfect outdoor classroom and offers a huge range of fantastic opportunities for all our students. Located in the beautiful Worcestershire countryside, Lakeside is just a 10-minute drive from our St John's Campus. The 50-acre site hosts a watersports lake, woodlands and an outdoor education activity centre.



“”

### I CH♥SE WORCESTER

“...because of the blended teaching approach – I loved that everything that was taught in the classroom was also taught practically.”

Worcester's community atmosphere allowed me to develop strong relationships with staff and students, some of whom are now lifelong friends. Lecturers also encouraged me to explore topics I am passionate about and gave many opportunities to develop myself further.”

Grace Chadwick,  
Physical Education and Sports Coaching



You might also be interested in:

Discover more about our Lakeside campus

Watch an exciting overview of Sport at Worcester



Explore online Scan to find the related content shown above.

## I CH♥SE WORCESTER

“The course content of integrating work placement within the three years of academic study appealed to me, allowing continual practical application of course theory. I had an overriding feeling of ‘belonging’ from day one to the end of the course.”

Georgina King,  
Sports Therapy



# Sports Therapy

Our courses are about more than injury treatment and prevention. You'll develop your skills and experience across sports therapy and exercise science.

Accredited by The Society of Sports Therapists, the course is developed in line with contemporary thinking and utilises the latest specialist techniques. Excellent industry links – with a variety of sports clubs and clinics – give our students insight into a range of Sports Therapy careers.

### Available courses

- ..... Sports Therapy BSc (Hons) .....
- ..... Sports Therapy MSci (Integrated Masters) .....



Detailed information  
Scan for detailed course information and entry requirements.



## Practical experience embedded throughout the course

Sophie graduated in Sports Therapy and is now Head of Sports Therapy at Hereford Rugby Club.



### I CH<sup>♥</sup>SE WORCESTER

“The placement opportunities for Sports Therapy stood out for me due to the connections that the University had with clinics and sports clubs, both amateur and professional.

The facilities and spacious clinic rooms made both lectures and practicals engaging, alongside fantastic support from lecturers. It’s a great place to study!”

Sophie Monks,  
Sports Therapy

### I CH<sup>♥</sup>SE WORCESTER

“During my final year of Sports Therapy, I had the privilege of working with Worcester Wolves Basketball Team. Afterwards, I was able to stay in touch and continue to work with them.

Now having graduated, I have continued work as a Sports Therapist and am currently combining clinical work with my position as Head of Sports Therapy at Hereford Rugby Club.”

Sophie Monks,  
Sports Therapy

### You might also be interested in:

What is sports therapy and where will it take me? Recent graduate Emma explores career options in sports therapy  
Sports Therapy student stories



Explore online  
Scan to find the related content shown above.



## I CH<sup>♥</sup>SE WORCESTER

**“I felt very supported at all times and no problem ever felt too small to discuss.**

My placements at local high schools were fantastic! I was concerned that my hearing impairment would negatively impact my ability to become a teacher, but I was wrong. The University helped me apply for some extra funding that enabled me to get a microphone and loop system that I could use in my classroom to help hear my pupils better.”

Trish Duncan,  
PGCE Secondary

# Teacher Training

Originally founded as a teacher training college in 1946, the University has been training inspirational teachers for more than 75 years.



We're in the top five UK universities for Quality Education, according to the 2022 Times Higher Education's global University Impact Rankings, so you know you'll be in good hands.

We equip you for a career with excellent job prospects and competitive salaries. As a Worcester graduate you'll make a difference in your community and shape lives.

**Detailed information**  
Scan for detailed course information and entry requirements.

### Undergraduate courses

If you'd like to teach in a primary school, you can gain a degree and qualified teacher status (QTS) together on our three-year undergraduate course:

- Primary Initial Teacher Education (with QTS) BA (Hons)
- Teaching in Primary Education (with QTS) BA (Hons)
- Top-up Degree

### Postgraduate courses

You gain a degree first and then complete a one-year Postgraduate Certificate in Education (PGCE) course, which will lead to qualified teacher status (QTS)

- PGCE Further Education (non-QTS)
- PGCE Primary
- PGCE Primary with SENDI
- PGCE School Direct Primary
- PGCE School Direct Secondary
- PGCE Secondary
- Diploma in Education and Training (DET)
- University Diploma in Personal, Social and Health Education



## From teaching placement to career

Owen studied a PGCE in Primary Education after completing an undergraduate degree at Worcester. He undertook three school-based placements during his PGCE year, the final one being at a small village school not far from the University and he is now an early career teacher (ECT) at that same school.



### I CHOSE WORCESTER

“When I came to the end of my placement, a job became available in the school. I’d loved it so much in the school, I just had to go for it.”

As an early career teacher (ECT) I still get lots of support from the University. I know that I can call upon the lecturers any time for any help and advice, it’s really great. It’s good to know the University is still there for me. You get so much support at Worcester. I am still able to access all the resources that I used while doing the course, which is also really good.

I am very proud of myself for achieving what I have. Teaching is definitely living up to what I thought it would. It’s hard work but very rewarding. The PGCE gave me the best training and preparation for what it would be like. I’m loving every minute of it. I would say teaching is one of the best jobs you could have.”

Owen Thomas,  
PGCE Primary

### You might also be interested in:

A Day in the Life of a Primary School Teacher

An exploration of the importance of teaching and learning through play

Watch recent graduate Dan talk about his experience of a secondary PGCE



Explore online Scan to find the related content shown above.



Ellie secured a teaching role straight after completing her three-year Primary Initial Teacher Education degree, and she is loving every minute of it.

“Everything seems to have fallen into place and I feel so lucky to be working alongside a highly experienced and supportive team in my new school. Long term I would like to work my way up in the education sector.”

**As someone who has had great mentors on teaching practice, I would love to work with trainee teachers, offering them the same support I received.”**

Ellie Dowsett,  
Primary Initial Teacher Education



# A-Z of courses



This course listing is subject to change. Please visit our website for the most up-to-date list, as well as detailed course information.

## a

Accounting and Finance BA (Hons)	47
Advancing Practice BA (Hons) Top-up Degree	63
Animation (Joint Honours)	39
Applied Health and Social Care BA (Hons) Top-up Degree	79

## b

Biological Sciences BSc (Hons) with Foundation Year	43
Biological Sciences (Biology) BSc (Hons) or MBIol (Integrated Masters)	43
Biological Sciences (Biochemistry) BSc (Hons) or MBIol (Integrated Masters)	43
Biological Sciences (Human Biology) BSc (Hons) or MBIol (Integrated Masters)	43
Biological Sciences (Zoology) BSc (Hons) or MBIol (Integrated Masters)	43
Biomedical Science BSc (Hons)	97
Business and Finance BA (Hons)	47
Business and Human Resource Management BA (Hons)	47
Business and Marketing BA (Hons)	47
Business Management BA (Hons)	47
Business Management BA (Hons) Top-Up	47
Business Psychology BSc (Hons)	119
Business Studies BA (Hons)	47

## c

Chartered Manager Degree Apprenticeship	47
Child & Adolescent Mental Health FdSc	79
Child & Adolescent Mental Health BSc (Hons) Top-Up Degree	79
Clinical Psychology BSc (Hons)	119
Computing BSc (Hons)	55

Computing Foundation Year	55
Counselling FdSc	79
Counselling Psychology BSc (Hons)	119
Creative Writing BA (Hons)	67
Cricket Coaching and Management (Integrated Masters or BSc)	127
Criminology BA (Hons)	91
Criminology with Forensic Psychology BA (Hons)	91
Criminology with Policing BA (Hons)	91
Criminology with Politics BA (Hons)	91
Cyber Security BSc (Hons)	47

## d

Dance Theatre BA (Hons)	59
Data Science BSc (Hons)	47
Dental Technology FdSc	97
Diagnostic Radiography BSc (Hons)	97
Digital Business BA (Hons)	47
Digital Marketing BA (Hons)	47
Digital Media Production BA (Hons)	87
Diploma in Education and Training (DET)	137

## e

Early Childhood in Society (Graduate Practitioner) BA (Hons)	51
Early Years (0-8) Foundation Degree	51
Early Years (0-8) Foundation Degree – flexible distributed learning pathway	51
Early Years Professional FdA	51
Education Studies BA (Hons)	63
English Language (Joint Honours)	67
English Literature BA (Hons)	67
Environmental Management and Sustainability BSc (Hons)	75
Environmental Management and Sustainability with Foundation Year BSc (Hons)	75

Environmental Management and Sustainability with Placement Year BSc (Hons)	75
Exercise and Wellness Management BSc (Hons) Top-up Degree	127
Exercise and Wellness Management FdSc	127

## f

Film Production BA (Hons)	71
Film Studies BA (Hons)	67
Fine Art BA (Hons)	39
Fine Art with Psychology BA (Hons)	39
Football Business Management and Coaching FdSc	127
Forensic and Applied Biology BSc (Hons)	43
Forensic Psychology BSc (Hons)	119

## g

Game Art BA (Hons)	39
Geography BSc (Hons)	75
Geography BSc (Hons) with International Year Abroad	75
Graphic Design BA (Hons)	39
Graphic Design, Advertising and Marketing BA (Hons)	39

## h

Health and Social Care FdSc	79
Health and Wellbeing in Society FdSc	79
Health Psychology BSc (Hons)	119
Healthcare BSc (Hons)	79
Healthcare Foundation Year	79
History BA (Hons)	83
History with Politics BA (Hons)	83

## i

Illustration BA (Hons)	39
Inclusive Education FdA	63
Integrated Working with Children & Families BA (Hons) Top-up Degree	51
Integrative Counselling BA (Hons)	79
Integrative Counselling FdA	79
International Business Management BA (Hons)	47
International Finance BA (Hons) Top-up Degree	47

## j

Journalism BA (Hons)	87
----------------------	----

## l

Law LLB (Hons)	91
Law with Criminology LLB (Hons)	91
Law with Forensic Psychology LLB (Hons)	91
Law with Politics LLB (Hons)	91
Learning and Education FdA	63
Learning Support FdA	63

## m

Marketing, Advertising and Public Relations BA (Hons)	47
Media & Culture BA (Hons)	67
Medical Sciences BSc (Hons)	97
Medicine MBChB	97
Mental Health and Wellbeing of Children and Young People FdSc	79
Midwifery BSc (Hons)	103
Musical Theatre BA (Hons) with Millennium Performing Arts	59

## n

NCT Perinatal Education and Practice CertHE	103
Nursing Associate Apprenticeship	107
Nursing Associate FdSc	107
Nursing BSc (Hons)	107

## o

Occupational Therapy BSc (Hons)	115
Outdoor Leadership and Adventure Sports Coaching BSc (Hons)	127

## p

Paramedic Science BSc (Hons)	111
PGCE – Further Education	137
PGCE – Primary	137
PGCE – Primary Education with SENDI	137
PGCE – School Direct Primary	137
PGCE – School Direct Secondary	137
PGCE – Secondary	137
Physical Education BSc (Hons)	127
Physical Education and Sports Coaching BSc (Hons)	127
Physician Associate MSc	97
Physiotherapy BSc (Hons)	115
Politics Degrees	83
Primary Initial Teacher Education (with QTS) BA (Hons)	137
Professional Policing BA (Hons)	91
Professional Practice BA (Hons) Top-up Degree	63
Psychology BSc (Hons)	119

## r

Return to Nursing Practice	107
----------------------------	-----

## s

Screenwriting (Joint Honours)	71
Social Work BA (Hons)	123
Sociology BA (Hons)	83
Sociology with Politics BA (Hons)	83
Special Educational Needs, Disabilities and Inclusion BA (Hons)	63
Sport and Exercise Psychology BSc (Hons)	119
Sport and Exercise Science BSc (Hons)	127
Sport Business Management BA (Hons)	127
Sport Development and Coaching BA (Hons)	127
Sports Coaching and Physical Education FdSc	127
Sports Coaching BSc (Hons)	127
Sports Therapy BSc (Hons)	133
Sports Therapy MSci (Integrated Masters)	133

## t

Teaching and Learning FdA	63
Teaching in Primary Education (with QTS) BA (Hons) Top-up Degree	137
Theatre, Acting & Performance BA (Hons)	59
Touring Theatre MTheatre	59

## u

University Diploma in Leadership and Management (UDLM)	47
University Diploma in Personal, Social and Health Education	137

# Joint Honours Combinations

Many of our Undergraduate degree courses are available as joint honours as well as major/minor combinations, allowing you to combine two courses to tailor your degree to your interests and career aspirations.



Our Joint Honours offer is subject to change. Please visit our website for the most up-to-date course list, as well as detailed course information.

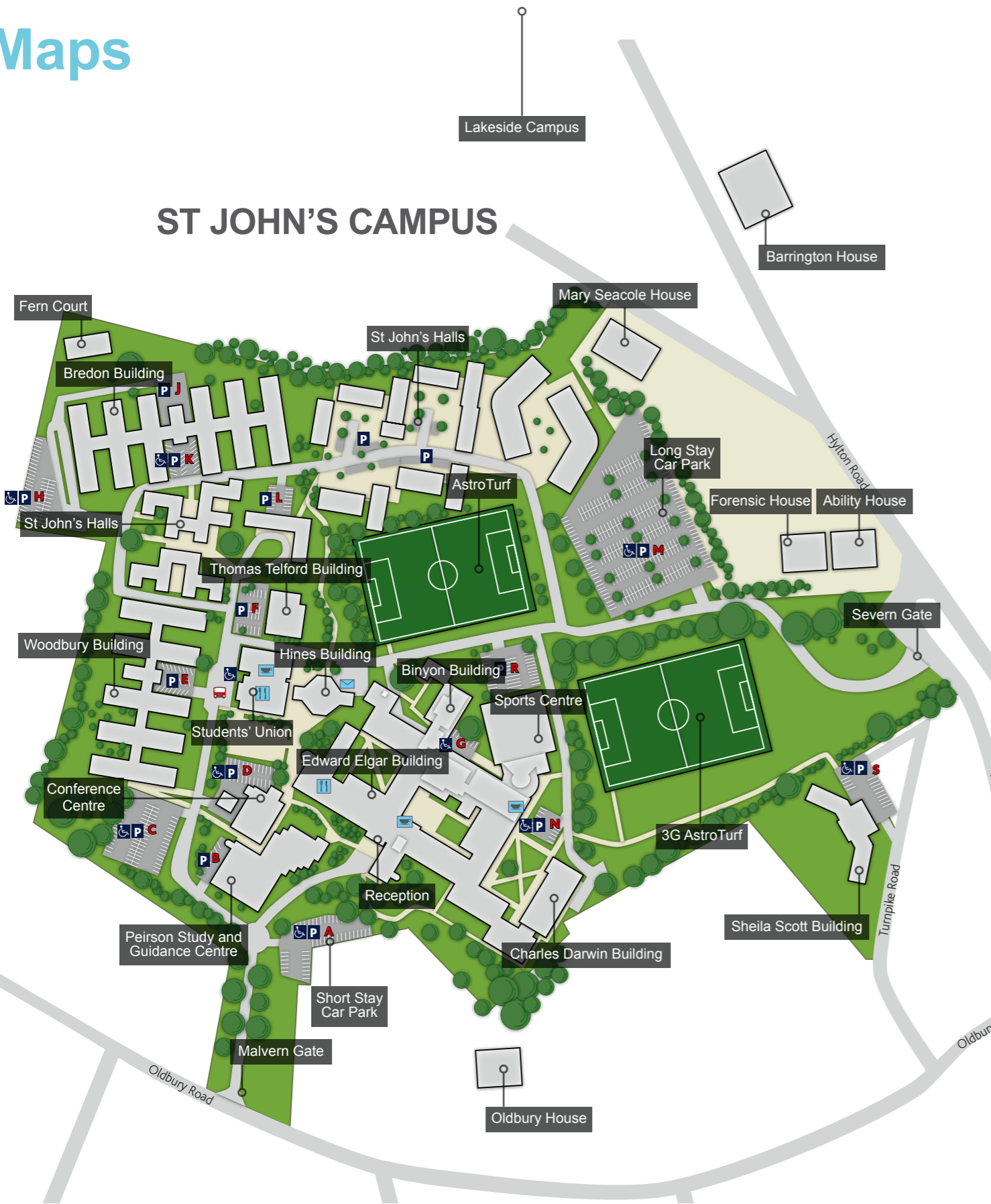
	Animation	Computing	Creative Writing	Criminology	Digital Media Production	Education Studies	English Language	English Literature	Film Production	Film Studies
Animation									W690	
Computing						GX43				
Creative Writing							WQ83	WQ82		
Criminology										
Digital Media Production									P393	
Education Studies		GX43					XQ3H	XQ33		
English Language			WQ83				XQ3H	QQ23		
English Literature			WQ82				XQ33	QQ23		QP3H
Film Production	W690				P393					PW36
Film Studies								QP3H	PW36	
Fine Art										
Game Art	I680									
Graphic Design	WWP2				PW3G					
History			WV81					QV31		
Illustration	WW6F		WW82							
Journalism					GP45		PQ53	QP35		
Media & Culture			WPFW		WPF3		PQ33	QP33		P390
Psychology				L3C8		XC38				
Screenwriting	WW68		W990						WW6V	PW38
Sociology				L301		XL33	QL33			
Theatre, Acting & Performance								WQ43		WP4H

	Fine Art	Game Art	Graphic Design	History	Illustration	Journalism	Media & Culture	Psychology	Screenwriting	Sociology	Theatre, Acting & Performance
Animation		I680	WWP2		WW6F				WW68		
Computing											
Creative Writing				WV81	WW82		WPFW		W990		
Criminology								L3C8		L301	
Digital Media Production			PW3G			GP45	WPF3				
Education Studies								XC38		XL33	
English Language						PQ53	PQ33			QL33	
English Literature				QV31		QP35	QP33				WQ43
Film Production									WW6V		
Film Studies							P390		PW38		WP4H
Fine Art					WW1F						
Game Art											
Graphic Design					W292						
History						4Q23				VL13	
Illustration	WW1F		W292								
Journalism				4Q23			PP53		50P6		
Media & Culture							PP53			LP33	
Psychology										CL83	
Screenwriting						50P6					WW48
Sociology				VL13			LP33	CL83			
Theatre, Acting & Performance									WW48		



# Maps

## ST JOHN'S CAMPUS



## SEVERN CAMPUS



## CITY CAMPUS



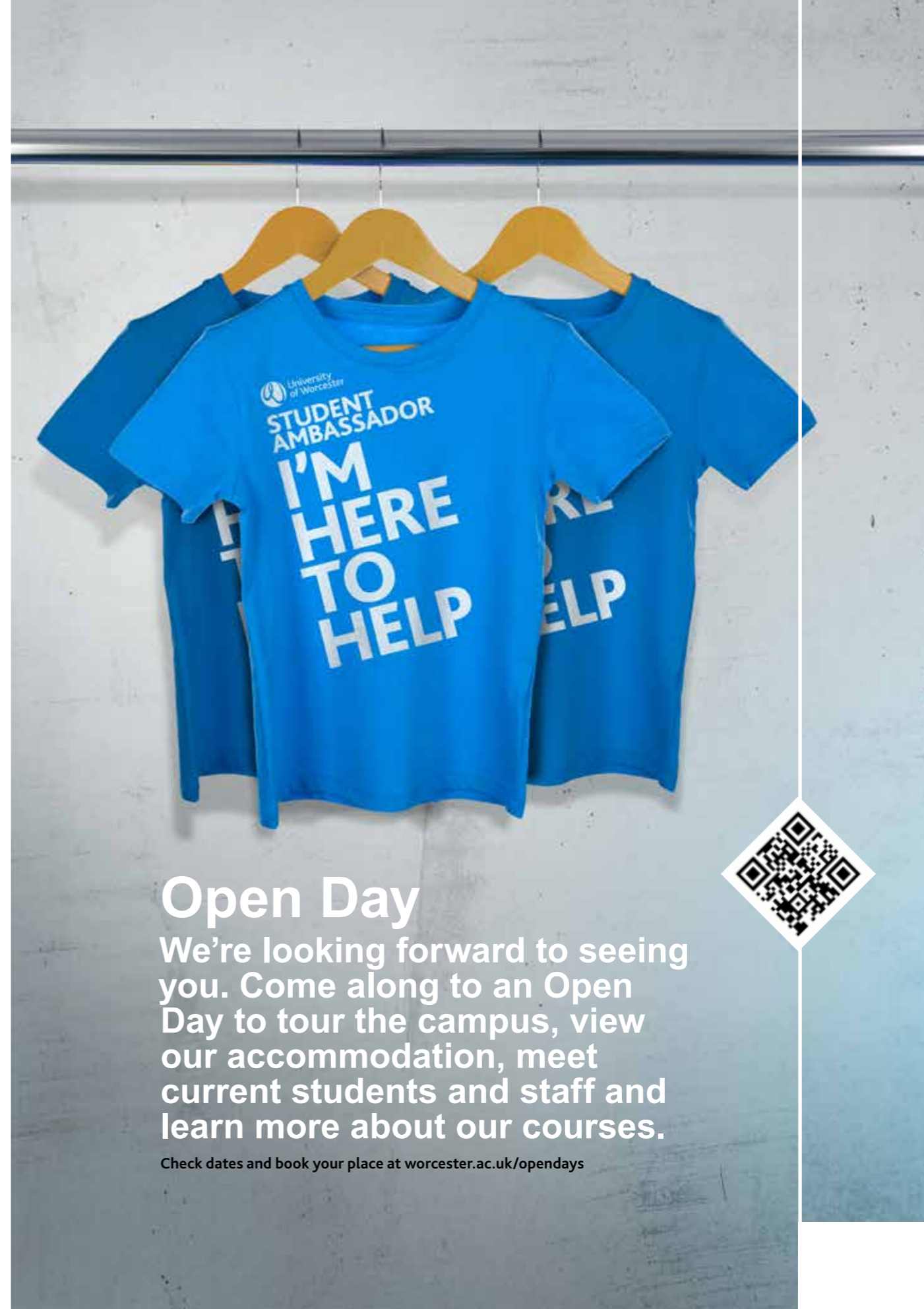
# Travelling to Worcester

These are the average travel times from a few key locations.

Birmingham	45 mins
Bristol	1 hr 10 mins
Derby	1 hr 40 mins
London	2 hrs
Exeter	2 hrs 30 mins

University of Worcester  
St John's Campus  
Henwick Grove  
Worcester  
WR2 6AJ

01905 855141  
study@worc.ac.uk  
www.worcester.ac.uk



## Open Day

We're looking forward to seeing you. Come along to an Open Day to tour the campus, view our accommodation, meet current students and staff and learn more about our courses.

Check dates and book your place at [worcester.ac.uk/opendays](http://worcester.ac.uk/opendays)



**INSPIRED  
FOR  
LIFE**



worcester.ac.uk  
study@worc.ac.uk