

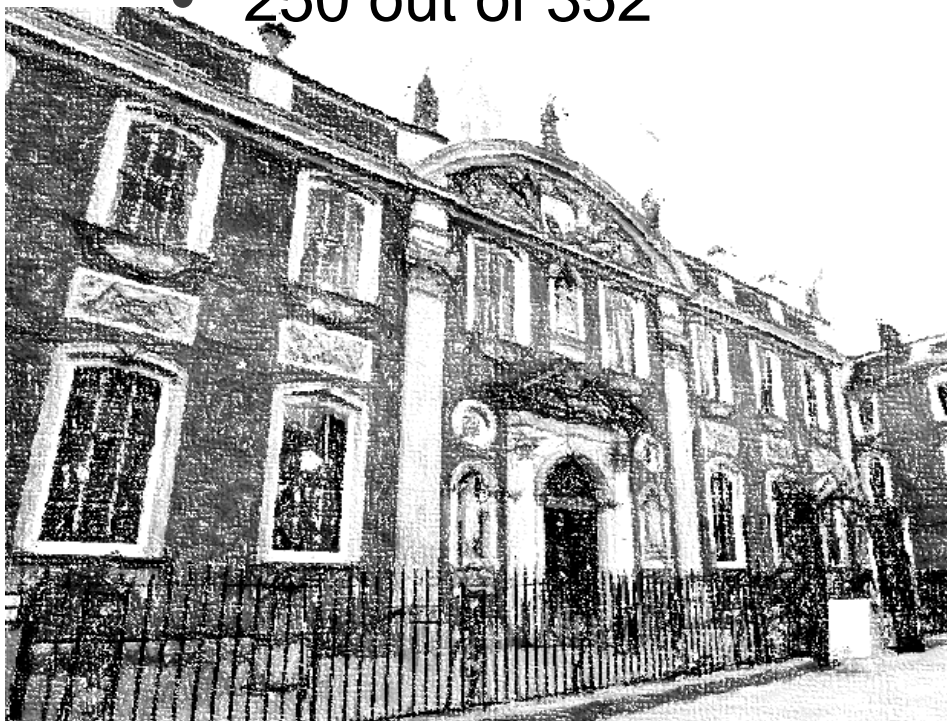
# Student Landlord Recycling Initiative - the white bag

Danny Welsh - Second year Sociology

Morgan Koronis – Second year Drama with  
Sustainability

# Recycling rates in Worcester

- In 2014/15 financial year only 37.3% of rubbish was recycled
- Highest local council is 67.3%
- 250 out of 352



# This presentation will explore....

- Facts and figures
- History of previous joint recycling initiatives
- Rejuvenating recycling campaign
- Launch of the White Bags

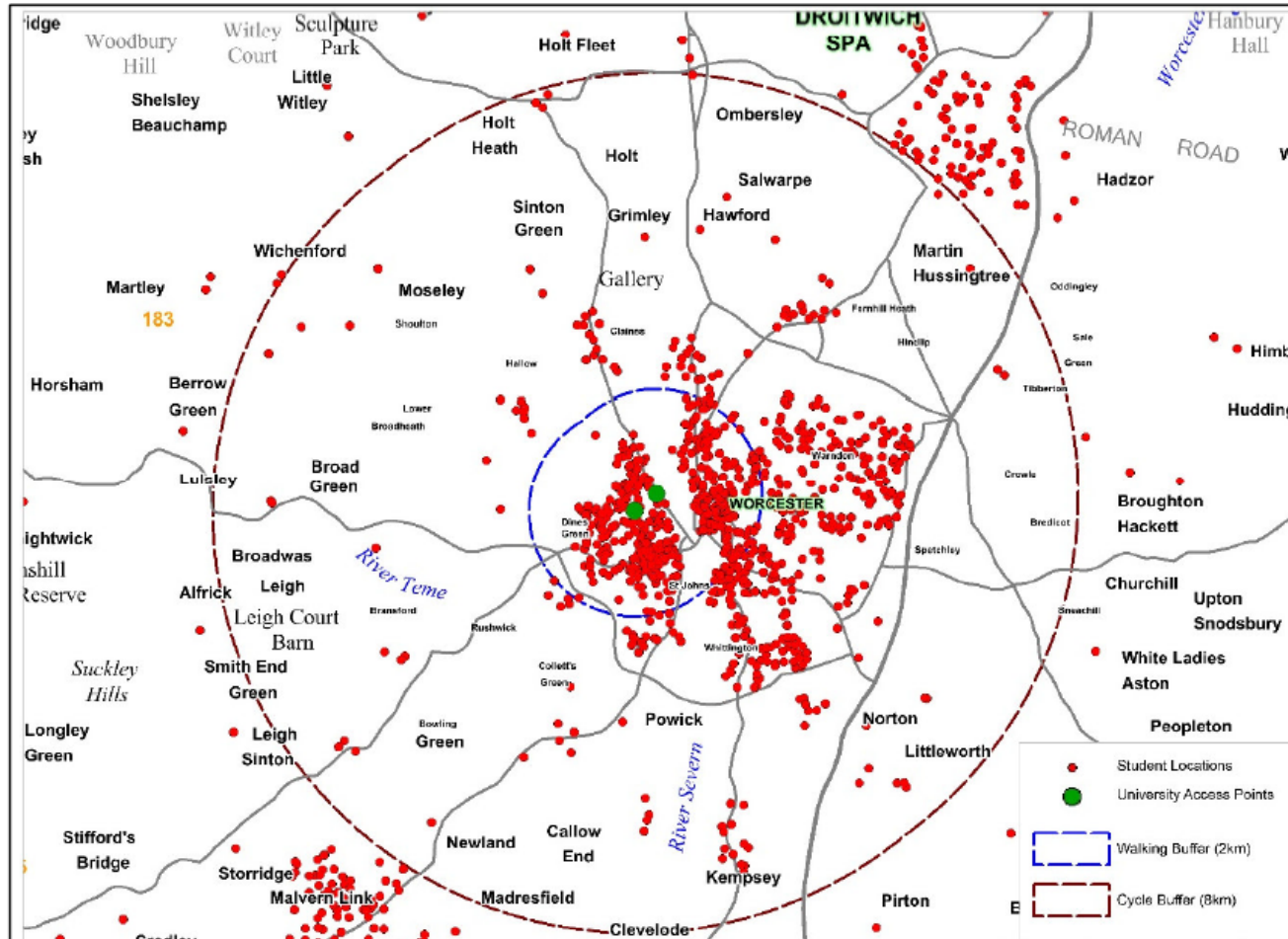
# Worcester City Council facts and figures

- 95,000 residents live in Worcester
- Worcester City is a District Council, it collects the waste
- Worcestershire County Council dispose of it
- 9000 students at Worcester (12,000 partner colleges)

# University student housing facts and figures

- No exact figure
- University accredited Student housing website
- 544 student properties
- 2,521 bed spaces
- 4.6 students per house
- Worcester City Council licenced properties
- Letting agencies

# Location of Student Houses in Worcester



# Previous Campaign :

“ A cleaner and greener approach to student waste”  
project between University of Worcester and City  
Council

➤ purpose was to:

- Increase student recycling in halls
- Change students attitudes and behaviours

➤ The results

120% recycling increase on campus

- 2 Green Apple awards

# Our current campaign “Rejuvenating recycling”

- Student led - Morgan Koronis
- CIWM
- Online course- Waste smart
- Behaviour change



# Results from Waste Smart course

- 10 student volunteers
- All students passed on the first attempt
- Average assessment mark was 84%
- 1 person achieved 100%



# Rejuvenating recycling: From research to application

A talk by Morgan Koronis



# The White bag

1 2 3 4 5 6 7 8 9 10 11 12 13 14 15 16 17 18 19 20 21 22 23 24 25 26 27 28 29 30 31 32 33 34 35 36 37 38 39 40 41 42 43 44 45 46 47 48 49 50 51 52 53 54 55 56 57 58 59 60 61 62 63 64 65 66 67 68 69 70 71 72 73 74 75 76 77 78 79 80 81 82 83 84 85 86 87 88 89 90 91 92 93 94 95 96 97 98 99 100  
MAT

26.5 cm

11.5 cm

3.

**recycle**  
for Worcester

**THE MORE YOU RECYCLE  
THE LESS GOES TO LANDFILL**

cardboard thin boxes cereal ready meals corrugated egg boxes kitchen and bath roll tubes flatten cardboard boxes and tubes remove inner packaging	<b>mixed glass</b> bottles <b>jars</b> <b>rinse</b> no tops corks or caps <b>labels</b> can be left on all colours accepted	<b>cartons</b> <b>milk</b> <b>juice</b> smoothie <b>cartons</b> fabric conditioner <b>soup</b> chopped tomatoes <b>custard</b> <b>rinse</b> no need to squash cartons plastic sprouts can be left on	<b>food tins</b> <b>drink cans</b> aerosols sweet tins bleach tins metal lids <b>rinse</b> push sharp lids inside the <b>labels</b> can be left on no need to squash	<b>paper</b> newspapers magazines phone directories journals catalogues brochures junk mail leaflets greening cards letters envelopes keep paper <b>flat</b> remove plastic wrappers <b>you can</b> <b>compost</b> your shredder paper <b>at home</b>	<b>plastic bottles</b> drinks cleaning bleach detergent fabric conditioner <b>yoghurt</b> yoghurt cream and vanilla ice cream tubs sauce and sauce margarine containers bath and vegetable <b>punnets</b> meat and fish sals and party <b>trays</b> egg boxes labels can be left on <b>rinse</b> bottles and containers no black plastic taps or caps no need to squash
---	--	---	--	--	--

 landfill	 mixed glass bottles & jars	 cartons	 food tins & drink cans	 paper	 plastic bottles & containers
---	--	--	---	--	---



www.worcester.ac.uk

## In Conclusion:

- Encourage students to recycle more
- Continuation of good recycling behaviours on and off campus
- 1 year review of white bags