



UK Meeting Centres Support Programme

UK

meetingcentres@worc.ac.uk





**Please note that the Webinar
will be recorded and posted on
our website**

**Can you now turn off your
microphones and cameras as the
webinar is about to start**

Set your view to Speaker View





The UK Meeting Centres Support Programme Webinar Series 2021

Meeting Centres: Our journey so far

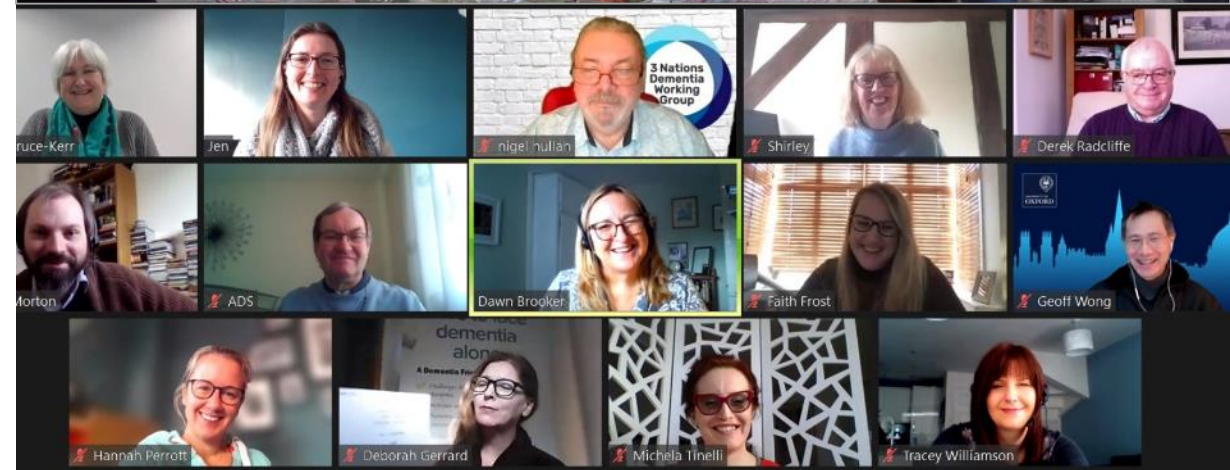
**Professor Dawn Brooker MBE
Dr Shirley Evans**

26th February 2021

From crowded conferences to online webinar series

Eight one-hour webinars on Fridays -
12-1pm throughout 2021

- 26th Feb: UK Meeting Centres: Our Journey so far
- 26th March: We didn't risk assess for this – COVID impact
- 30th April: You've come to the right place: Location
- 28th May: It all comes down to a question of money: Funding
- 25th June: Everyone brings something: Inclusion
- 24th Sept: New Kids on the Block: Getting going
- 29th Oct: Scaling up: Locality wide programmes
- 26th Nov: Sustainability of Meeting Centres Nationally



Completed ADS Research Projects relating to Meeting Centres

All these contribute to our current work on Meeting Centres in the UK

Completed work

ALCOVE (2011-2013)

Recommendations for best practice in improving early diagnosis for people with dementia across EU member states

At Home with Dementia (2012-2015)

The development and evaluation of a holistic model of service provision to support carers and families of those living with dementia

Rethinking Respite (2018-2019)

Conducting a literature review of respite and exploring examples of good practice in Wales and across the UK more widely

MeetingDem (2014-2017)

Implementing and evaluating the Meeting Centres Support Programme in the UK, Italy and Poland

SCI-Dem (2018-2020)

A realist review about “what works, for whom, in what circumstances, in what respects and how” for community-based interventions for people with dementia

Current ADS
projects
relating to
Meeting
Centres

Current work

**UK Meeting Centres Support Programme
(2018-2022)**

Establishing 15-20 new Meeting Centres across the UK

**Community Makers
(2020-ongoing)**

Supporting people to stay connected
through technology

**Worcestershire Meeting Centres
Community Support
Programme
(2020-2025)**

Supporting the establishment of new
Meeting Centres in Worcestershire

**Get Real with Meeting Centres
(2021-2023)**

Realist evaluation to explore what helps
Meeting Centres to succeed and what
needs to be in place to sustain them over
time

**Leominster Meeting Centre
Heritage Project
(2021-2021)**

Developing new heritage-participation
projects

**Shaw Foundation PhD
studentship
(2021-2024)**

Exploring regional support to scale-up
Meeting Centre provision

**Worcester Life Stories Research
(2020-2022)**

Exploring the use of heritage websites
and engagement and connection with
heritage

Knowledge transfer

**Training to support
Meeting Centre staff and
volunteers**

Individual funding
Expanding training delivery to other
countries

Local DAAs

Attendance and engagement

We are part of a global network of supporting people and families affected by dementia worldwide

<https://www.meetingdem.eu/>

Meeting Centres Across the World



The Essential Features of a Meeting Centre

UK Meeting Centres Support Programme
(UKMCSP)



Essential Features of a Meeting Centre

Please see separate [page](#)

Worcestershire Meeting Centres Community Support Programme

Please see separate [page](#)

Training programme to help staff/volunteers

Please see separate [page](#)

Meeting Centre - Bring Your Own Lunch

Please see separate [page](#)

UKMCSP Webinar Series 2021

Please see separate [page](#)

Further information and resources

Please see separate [page](#)

Sign up to joining the UK Meeting Centres Support



Guidebook for Setting up and Running a Successful Meeting Centre

A resource from the UK Meeting Centres Support Programme



What is a Meeting Centre?

Lots of web-based resources, films and guidance documents available

The UK Meeting Centre Support Programme (UK MCSP)

- This funding from the National Lottery Community Fund Portfolio Grant (2018-21) will enable us to build real capacity across the UK so that Meeting Centres can form a backbone of community-based active support to people and families across the country.
- By working together with early adopters in their communities and with national influencers, the programme will attain the national visibility, momentum and traction to bring future generations of Meeting Centres on board.



meetingcentres@worc.ac.uk





**NATIONAL
LOTTERY FUNDED**



MEETING CENTRES UK

National Lottery funding UK MSCP Key outcomes

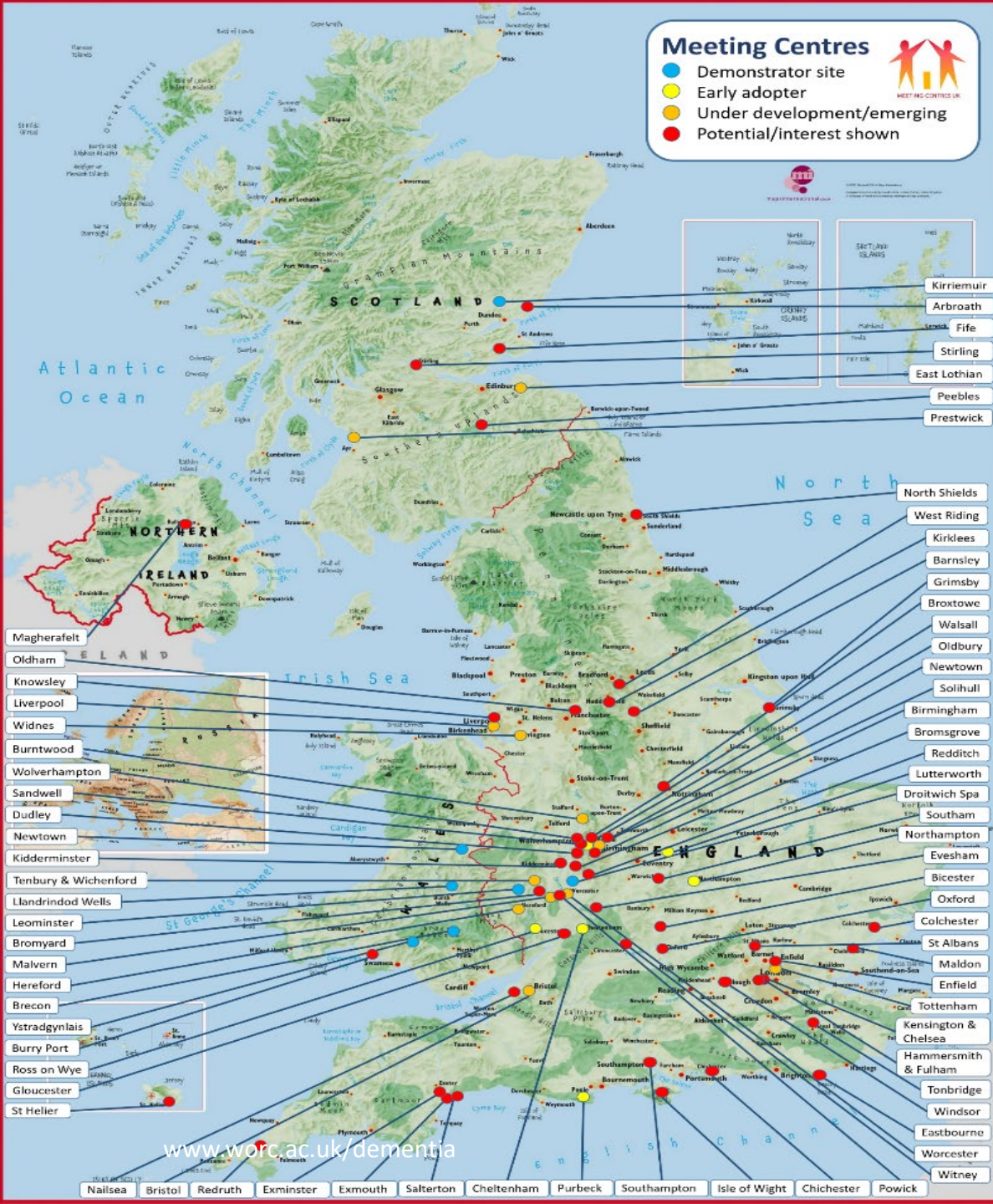
- Up to 15 new Meeting Centres opened or under development across the UK for people and families affected by dementia that can act as demonstrator sites and centres of learning for others
- Greater understanding from sharing the learning of how Meeting Centres function over time in different communities, different focusses, jurisdictions, locations, rural and urban
- Accessible information, training, skills development and on-going support on how to set up and sustain a functioning Meeting Centre in the UK.
- Greater understanding of the costs and benefits to people with dementia, family carers and local communities to be used as an evidence base for policy decision makers on the impact of Meeting Centres

meetingcentres@worc.ac.uk



UK MCSP How has Covid impacted on our progress?

- Project extended until 2nd January 2022.
- Existing Meeting Centres have continued to provide support during lockdown. 26th March webinar is dedicated to this.
- Emerging Meeting Centres have found it very difficult to get going.
- Impossible to predict what next 12 months will bring.
- Planning regarding what happens in 2022 has begun.



But you can't keep good people down!

Blue 4 Demonstrator Sites
(in 7 locations)

Yellow 6 Early Starters

Orange 12 Emerging

Red 48 Substantial
interest

UK-MCSP Target 1

**15-20 new Meeting
Centres opened or
under development**

- Four new MCs opened in Year 2 bringing number of MCs to 13 – Oldbury, Cheltenham, Purbeck and Newtown.
- It is anticipated that there will be at least another 12 opening in Year 3 - including Worcestershire Programme, Bristol, Liverpool, The Wirral, Birmingham, Prestwick and others in Scotland.
- This means that the target of 15 new MCs opening over the three years is likely to be met with a significant number under development by January 2022.

UK-MCSP Target 2

**Greater
understanding
from sharing the
learning**

- National Reference Group – 46 members; ratified the Essential Features publication
- Pioneer Workshops – 10 workshops with 176 participants. Moved towards bespoke online workshops – possibly more effective.
- Facilitated community of learning and practice – weekly and then fortnightly online MC Manager meetings – open to a range of participants – highly effective.
- Conference postponed – proposing monthly webinars of one hour building on BYOL starting February. Potential f2f conference in November - to be reviewed.

UK-MCSP Target 3

**Accessible
information,
training, skills
development and
on-going support**

- Two face to face training programmes before lockdown – Purbeck and Worcester.
- Developed five-week online module – update on this later.
- Resources - Essential Features developed and ratified.
- Self-evaluation toolkit – data collection tools

UK-MCSP

Target 4

Greater
understanding of
the costs and
benefits

- Training provided in the use of the data collection tools to the four demonstrator sites as well as Purbeck and Sandwell.
- Data collected from four demonstrator sites – attendance and health and well-being.
- Additional data collected during lockdown – interviews and focus groups. This has increased our understanding of how Meeting Centres function when they can't meet as usual (Webinar 26th March)

UK MCSP – getting the knowledge out there

- Newsletters – 2
- Conference presentations – 2
- Newspaper articles – 11
- TV and radio – 2
- Reports – 1
- Presentations – 4
- Journal articles – 2
- Webinars – 8
- Blog: <https://meetingcentres.wordpress.com/> -
- we have written 11 blogs with 269 visits. There is also a resource page <https://meetingcentres.wordpress.com/useful-resources/>
- Twitter: @MeetingCentres – we have 329 followers



- **University of Worcester winning the prestigious Times Higher Education Award 2019 for Outstanding Contribution to the Local Community for its work with MCs.**



Questions & Comments



www.worc.ac.uk/dementia

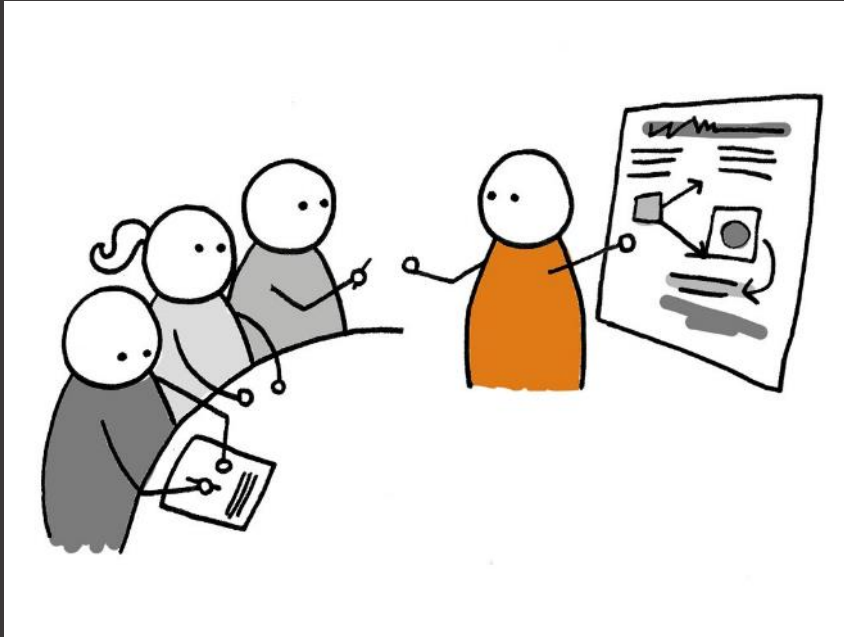
Training and Education for those delivering Meeting Centres in the UK

This work is led by Mary Bruce and
Nicola Jacobson Wright



Training

From this...



Pre-lockdown 2 day face to face training course developed and delivered, including practical activities

to this...



Creating an online alternative

Introducing the UK Meeting Centres “Mini Online Module”

- Virtual learning University of Worcester platform: Blackboard
- 5 consecutive weeks, 3-4 hours commitment each week
- Course participants do some learning online in their own time – video lectures, short films, activities, reading materials, discussion boards, reflective diary
- Once a week they come together with other students and tutor for a live online seminar session.
- First Cohort of 13 “students” commenced on 3rd February and completed this week.
- Very positive early feedback

Online Meeting Centre Mini-Module

Aim

To help staff and volunteers understand how to develop an enjoyable and flexible Meeting Centre experience.

Supports course participants to consider the different elements that make up a Meeting Centre and explore the practicalities of implementing it.

Dates

Week commencing

- 3rd -31st May 2021
- 2nd -30th August 2021
- 1st – 29th November 2021

If you are interested in receiving this training please email meetingcentres@worc.ac.uk or tel: 01905 542531 . We will then contact you and give more information about how and when to access the training. As spaces will be limited on each course please contact us asap.

Workshop Fee: The training is free to UK delegates due to this project being funded by the National Lottery

Update on significant developments in 2021



Worcestershire
Meeting Centres
Community Support
Programme



Shaw match funded
PhD Studentship on
strategic approach to
MCs

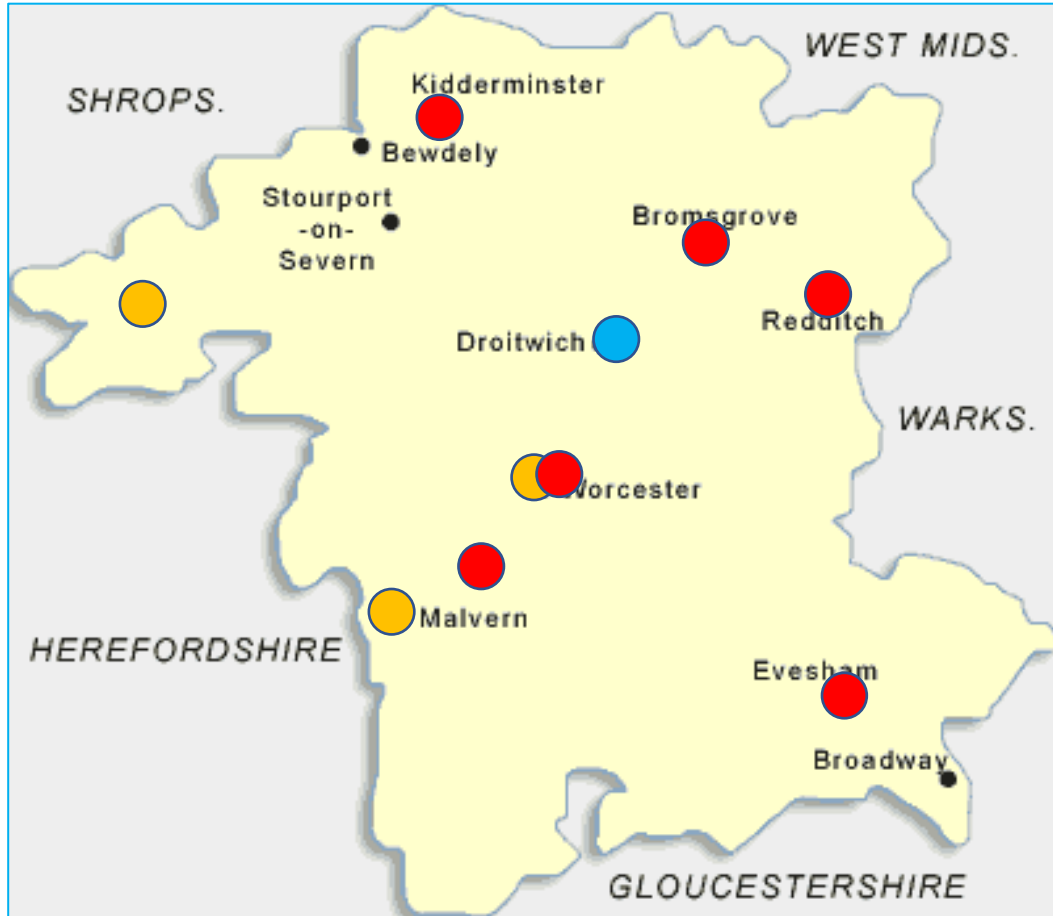


NIHR funded Research on MC
sustainability – Get Real
project

Worcestershire Meeting Centres Community Support Programme

- £ 540,000 from Worcestershire County Council – business rates pilot.
- Aim for 9 MCs across Worcestershire – up to £20K per year for 3 years.
- First funding available Feb 2021.
- 3 Meeting Centres have just been awarded funding

Worcestershire Meeting Centres



Blue 1 Demonstrator Site

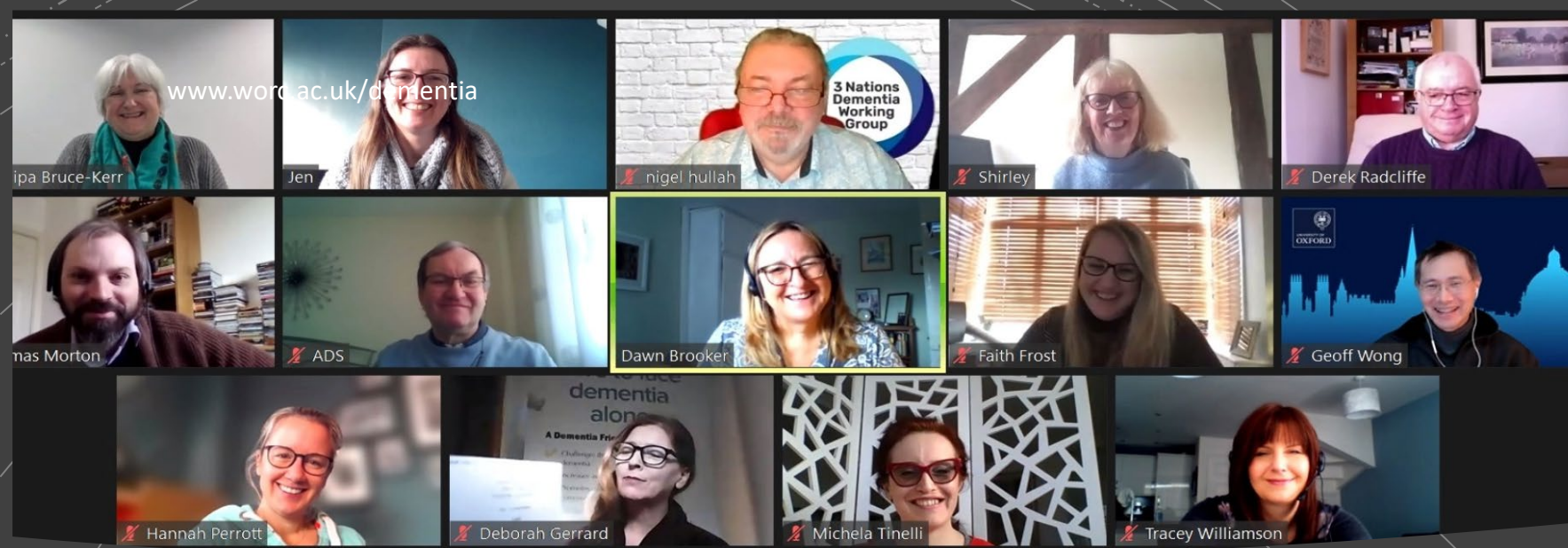
Orange 3 Recently funded

Red 6 Substantial interest

PhD Studentship

- The impact of a strategic regional approach to scaling up Meeting Centres for people affected by dementia.
- Match funded by the Shaw Foundation and the University of Worcester for 3-year full time PhD student.
- Appointed Nathan Stephens who commenced with us on 1st February.
- Webinar 29th October





Get Real with Meeting Centres



- Focus on Sustaining locally-driven social care for those affected by dementia: A realist evaluation of successful Meeting Centres.
- Two-year project starts Jan 2021. Led by University of Worcester with co-applicants from 3 Nations Working Group, LSE and Oxford University
- Realist Evaluations of three established UK MCs will be undertaken.
- Stakeholders from three MCs, including members directly affected by dementia, will provide qualitative and quantitative data.
- Data from all sources will refine the programme theory of how, why, for whom, in what contexts and to what extent MCs are successfully adopted and implemented by diverse communities.
- Willingness to pay for MC provision will be explored utilising a health economic analysis through a Discrete Choice Experiment.

Sustainability of Meeting Centres in the UK

- What is of paramount importance to achieve in 2021 to ensure MCs get established as part of the post-diagnostic landscape?
- Is geographical spread a priority?
- Should we maximise quality through fewer centres achieving the essential features OR maximise numbers of MCs?
- What do we need to be doing now to promote/fund a national MC infrastructure beyond 2022?



Questions & Comments



Friday 26th March 12.00 noon

UK Meeting Centres Support Programme

We didn't risk assess for this!

To REGISTER to attend these webinars via ZOOM go to
[https://zoom.us/meeting/register/tJMlfu2vpjMoGtAQHWgXQH
gBH4bHUBeBzBN_](https://zoom.us/meeting/register/tJMlfu2vpjMoGtAQHWgXQHgBH4bHUBeBzBN_)

Acknowledgements and thanks

Thanks to all of those living with dementia and their families, staff and volunteers who work through the Meeting Centres movement to make the world a better place.

Special Thanks to our funders

- *MEETINGDEM* (2014-17) was led by the VU Medical Center University Amsterdam MEETING DEM was an EU Joint Programme - Neurodegenerative Disease Research JPND <http://www.jpnd.eu> project number JPND_HC-559-018. The project was supported through the following funding organisations under the aegis of JPND; Italy, Ministry of Education and Ministry of Health; The Netherlands, ZonMw; Poland, NCBR; UK, ESRC Grant reference: ES/L00920X/1.
- *UK-Meeting Centres Support Programme (2018-22)* is funded by the Big Lottery UK Portfolio grant 31061526.
- *Get Real with Meeting Centres* is independent research funded by the National Institute for Health Research (NIHR) under its Research for Patient Benefit (RfPB) Programme (Grant Reference Number PB-PG-201-861). The views expressed are those of the author(s) and not necessarily those of the NIHR or the Department of Health and Social Care.



meetingcentres@worc.ac.uk



With very special thanks.....



- Professor Rose-Marie Dröes
- Founder of the Meeting Centres Support Programme & Principal Investigator on the MeetingDem Project
- Vision, inspiration and tireless commitment to making the world a better place for people and families affected by dementia world-wide.

References

- Evans, S., Bray, J. & Brooker, D. (In press 2021), How Meeting Centres continue to support people affected by dementia: report on UK COVID-19 impact, Working with Older People (In Press)
- Henderson, C., Rehill, A., Brooker, D., Evans, S.C., Evans, S.B., Bray, Szczesniak, D., Atkinson, T., et al (2021). Costs and Cost-Effectiveness of the Meeting Centres Support Programme for People Living with Dementia in Italy, Poland and the UK: The MEETINGDEM Study. *Health and Social Care in the Community*
- Szczesniak, D., Rymaszewska, J., Saibene, F., Lion, K., D'arma, A., Brooker, D., Evans, S.B., Evans et al (2021). Meeting centres support programme highly appreciated by people with dementia and carers: a European cross-country evaluation, *Aging & Mental Health*, 25(1), 149-159.
- Lion, K., Szczesniak, D., Evans, S.B., Evans, S.C., Brooker, D., et al (2021). Does the Meeting Centre Support Programme decrease the experience of stigmatisation among people with cognitive deficits?, *Aging & Mental Health*, 25(1), 160-169[originally online in 2019]
- Lion, K., Evans, S.B., Evans, S.C., Brooker, D., et al (2019). Do people with dementia and mild cognitive impairments experience stigma? A cross-cultural investigation between Italy, Poland and the UK. *Aging & Mental Health*, 1-9. <https://doi.org/10.1080/13607863.2019.1577799>
- Evans, S.B., Evans, S.C., Brooker, D., Henderson, C., Atkinson, T., Bray, J., et al (2018). The impact of the implementation of the Dutch combined Meeting Centres Support Programme for family caregivers of people with dementia in Italy, Poland and UK. *Aging & Mental Health*, 24(2), 280-290.
- Brooker D, Evans S, Evans S, Bray J, Atkinson T et al (2018) Evaluation of the implementation of the Meeting Centres Support Program in Italy, Poland, and the UK; exploration of the effects on people with dementia. *Int J Geriatr Psychiatry*. 2018;33(7) 883-892.
- Szczesniak, D., Dries, R., Meiland, F., Brooker, D., Evans, S.B., Evans, S.C., et al (2018). Does the community-based combined Meeting Center Support Programme (MCSP) make the pathway to day-care activities easier for people living with dementia? A comparison before and after implementation of MCSP in three European countries. *International Psychogeriatrics*, 30(11), 1717-1734.
- Van Mierlo, L., Chattat, R., Evans, S., Brooker, D., et al (2018). Facilitators and barriers to adaptive implementation of the Meeting Centers Support Program (MCSP) in three European countries; the process evaluation within the MEETINGDEM study. *International Psychogeriatrics*, 30(4) 527-537.
- Dröes, R. M., Meiland, F. J. M., Evans, S., Brooker, D., et al (2017) Comparison of the adaptive implementation and evaluation of the Meeting Centers Support Program for people with dementia and their family carers in Europe; study protocol of the MEETINGDEM project. *BMC geriatrics*, 17(1), 79-89.
- Mangiaracina, F., Chattat, R., Brooker, D., Evans, S.C., Evans, S.B., et al (2017) Not Re-inventing the Wheel: The Adaptive implementation of the Meeting Centres Support Programme in four European countries. *Aging and Mental Health*, Vol 21, No. 1, pp. 40-48
- Brooker, D., Evans, S.B. and Dröes, R.M. (2017) Framing outcomes of post-diagnostic psychosocial interventions in dementia. *Working with Older People*, Vol. 21 Iss: 1, pp. 13-21

Contact

meetingcentres@worc.ac.uk

www.worcester.ac.uk/UKMCSP2021webinars

Twitter @DementiaStudies
@MeetingCentres
Facebook @adsuow

See you next month