

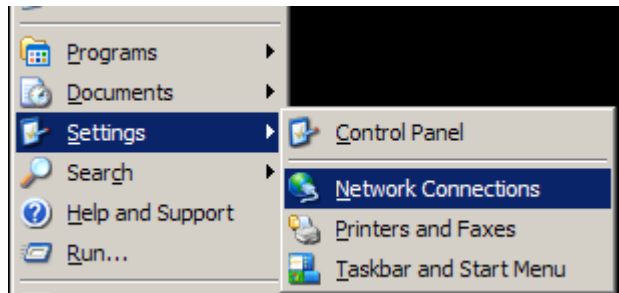
N & O Drive Speed Up

This applies to all users who have the Novell client on their machines and use the N and O drive.

To speed up access file access to the N and O drive please do the following:

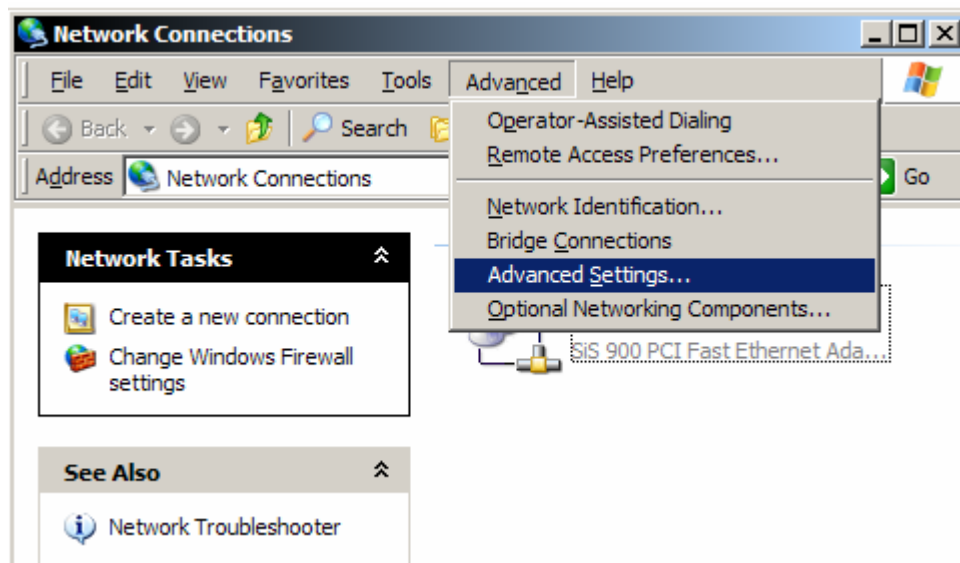
Click on the start bar > Setting > Network Connections.

On a Windows 2000 machine this will be called Network and Dial-up Connections.

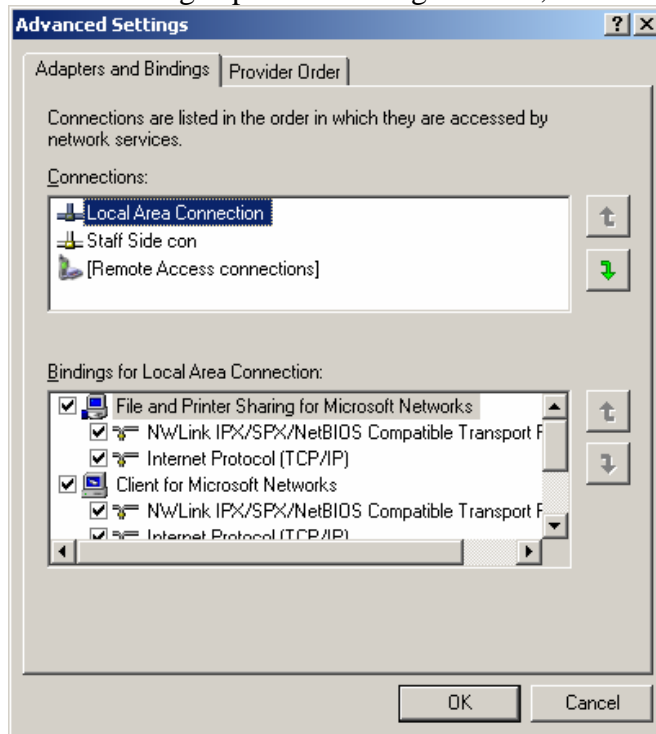


This will open the window below.

Now go to tool bar and select Advanced, then Advanced Settings as below.



This then brings up the following window; from this select the Provider Order tab.



In the Network Providers windows highlight the network provider called Microsoft Windows Network by clicking on it. The greyed out arrows to the right of the window should now be active, use the up ↑ arrow button to move the Microsoft Windows Network provider to the top of the network providers list. Finally click OK, and close the Network Connections windows.

